

SmartPlay HyperFlex

November 2017

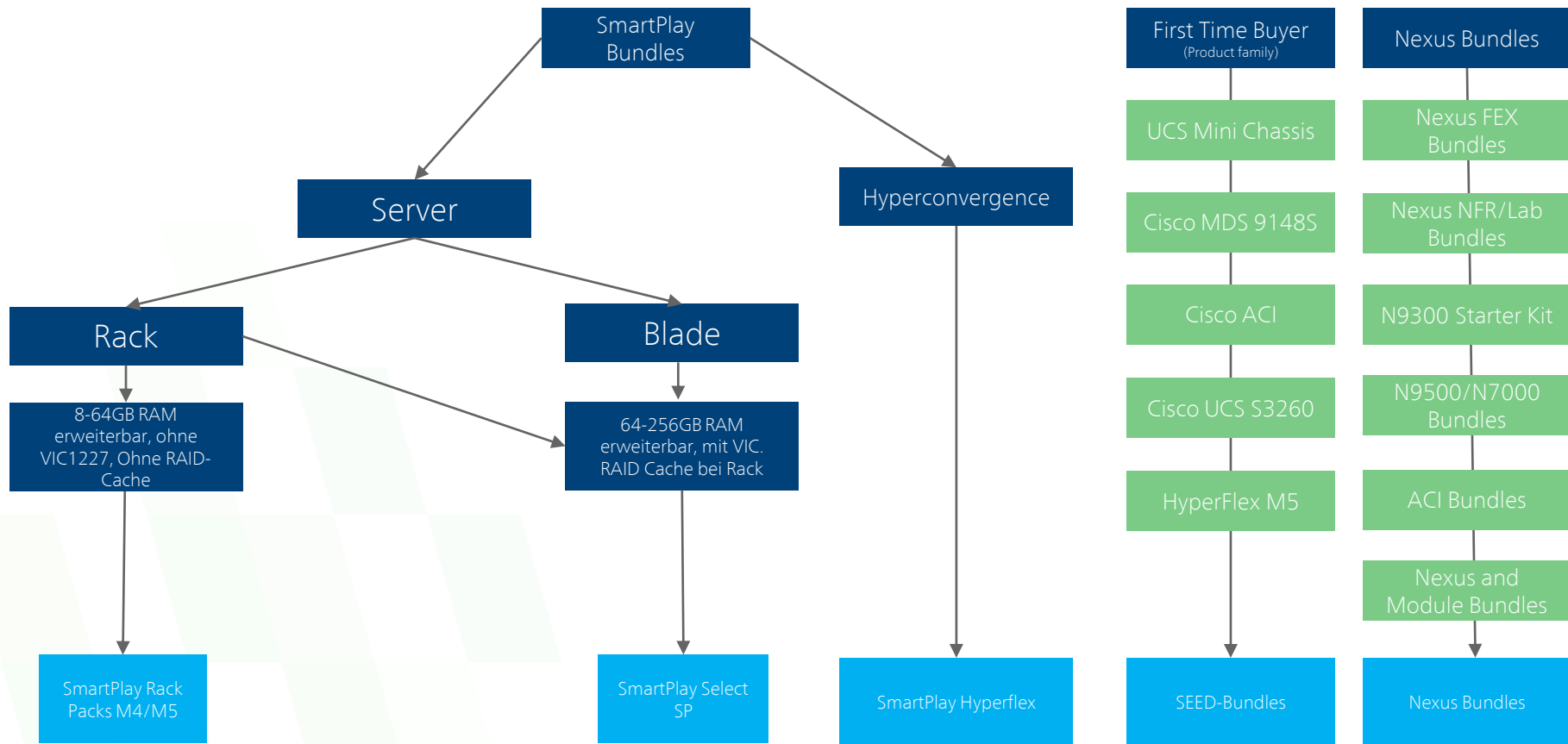


Comstor

Delivering Results Together
powered by WestconGroup



Distribution
Partner



Ihre Programm-Vorteile

- ▶ SmartPlay HyperFlex Aktionsangebote unterstützt Sie bei Ihrer Neukundenakquise: Zeigen Sie Ihren Kunden den Mehrwert der konfigurierten Systeme von Cisco HyperFlex.
- ▶ Das Aktionsangebot ist mit allen bestehenden Preisregelungen abgestimmt und ist somit für Ihre Kunden einfach verständlich.

HyperFlex Änderungen

Was ist neu?

- M5 CPU Angebote sind neu enthalten
- Alle M5 Nodes sind mit 1387 VIC ausgestattet
- Vereinfachte SKU Angebote
- Optional: FIs in neuen M5 SKUs
- 2 nd & 3rd Gen FI Support für M5 Nodes
- HX SmartPlays gültig für [Playcation program incentive](#)

Bitte beachten!

- Neue HyperFlex mit Cloud Center Bundles verfügbar
- M4 Angebote bis zum 27. Januar verlängert
- All Flash Node Erweiterung auf bis zu 16 Nodes
- Neue EDGE (ROBO) SKUs wurden ergänzt

Quick Links Guide

(mit Cisco ID)

Nützliche Links (via Cisco ID auf Englisch)

- [Selling DC website](#)
- [Smart Play Program Guides](#)
- [How to Config HyperFlex VOD](#)
- [Build and price](#)
- [CCW](#)
- [Partner central](#)
- [HyperFlex Program](#)

Bestellungen

Bei Erstinstallationen empfehlen wir die SmartPlay HyperFlex Appliance Bundles.

Eine Artikelnummer für HyperFlex Bestellungen

Auswahl: 1, 3, 4 oder 5 Jahre
Wartungsvertrag

6296 oder
6248 Fabric
Interconnects

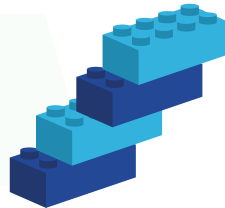
Standalone Nodes
sind als Erweiterung
verfügbar

Wie Sie bestellen

1)

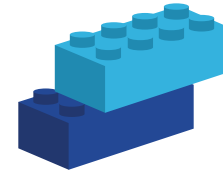
Wählen Sie die gewünschte SmartPlay HyperFlex Artikelnummer

2)



Wählen Sie die Anzahl der Nodes
(min 3; max. 8)

3)



Wählen Sie ein FI

M5 Angebote

Cisco SP HX-Series All Flash Bundles

HyperFlex SKUs	All Flash Node Konfiguration		Drive Optionen
HX220 Value HXAF-SP-220M5-V	<ul style="list-style-type: none"> 2x Intel® Xeon® Processor 4114 2.20 GHz, 10-core, 85W, 13.75MB cache 192GB DDR4 RDIMM (12x 16GB 2666 MHz) VMware vSphere Enterprise Plus (Optional) Cisco HX Data Platform SW subscription 	<ul style="list-style-type: none"> Cisco Virtual Interface Card 1387 MLOM Cisco 12 Gbps Modular SAS HBA Card 2x 770W PSU, 1x 32GB Micro SD Card 1x 240GB 2.5 SATA SSD 	Standard Drives <ul style="list-style-type: none"> 1x 240GB 6G SATA SSD 1x 400GB 12G SAS SSD 6x 960GB 6G SATA SSD Encrypted Drives (SED) <ul style="list-style-type: none"> 1x 240GB SSD 1x 800GB SAS SSD 6x 960GB SATA SSD
HX240 Value HXAF-SP-240M5-V	<ul style="list-style-type: none"> 2x Intel® Xeon® Processor 4114 2.20 GHz, 10-core, 85W, 13.75MB cache 384GB DDR4 RDIMM (12x 32GB 2666 MHz) VMware vSphere Enterprise Plus (Optional) Cisco HX Data Platform SW subscription 	<ul style="list-style-type: none"> Cisco Virtual Interface Card 1387 MLOM Cisco 12 Gbps Modular SAS HBA Card 2x 1600W PSU, 1x 32GB SD Card 1x 240GB 2.5 inch SATA SSD 	Standard Drives <ul style="list-style-type: none"> 1x 240GB 6G SATA SSD 1x 400GB 12G SAS SSD 11x 960GB 6G SATA SSD Encrypted Drives (SED) <ul style="list-style-type: none"> 1x 240GB 6G SATA SSD 1x 800GB 12G SAS SSD 11x 960GB 6G SATA SSD

*UCS Fabric Interconnects sind für jedes neue HyperFlex System notwendig! Auch dann, wenn Erweiterungen über bestehende FI Ports hinaus gehen.

Appliance Bundles enthalten:

- **HX Nodes:** Es müssen mindestens 3, maximal 8 Nodes ausgewählt werden
- SW Subscription
- **FI Paar** (6248 oder 6296 Port Fabric Interconnects)

Cisco SP HX-Series Hybrid Bundles

HyperFlex SKUs	Hybrid Node Konfiguration		Drive Optionen
HX220 Entry HX-SP-220M5-E	<ul style="list-style-type: none"> 2x Intel® Xeon® Processor 3106 1.70 GHz, 8-core, 85W, 11MB cache 128GB DDR4 RDIMM (8x 16GB 2666 MHz) VMware vSphere Enterprise Plus (Optional) Cisco HX Data Platform SW subscription 	<ul style="list-style-type: none"> Cisco Virtual Interface Card 1387 MLOM Cisco 12 Gbps Modular SAS HBA Card 2x 770W PSU, 1x 32GB Micro SD Card 1x 240GB 2.5 SATA SSD 	<p>Standard Drives</p> <ul style="list-style-type: none"> 1x 240GB 6G SATA SSD 1x 400GB 12G SAS SSD 6x 960GB 6G SATA SSD <p>Encrypted Drives (SED)</p> <ul style="list-style-type: none"> 1x 240GB SSD 1x 800GB SAS SSD 6x 1.2TB 12G SATA HDD
HX240 Performance HX-SP-240M5-P	<ul style="list-style-type: none"> 2x Intel® Xeon® Processor 6140 2.30 GHz, 18-core, 140W, 24.75MB cache 384GB DDR4 RDIMM (12x 32GB 2666 MHz) VMware vSphere Enterprise Plus (Optional) Cisco HX Data Platform SW subscription 	<ul style="list-style-type: none"> Cisco Virtual Interface Card 1387 MLOM Cisco 12 Gbps Modular SAS HBA Card 2x 1600W PSU, 1x 32GB SD Card 1x 240GB 2.5 inch SATA SSD 	<p>Standard Drives</p> <ul style="list-style-type: none"> 1x 240GB 6G SATA SSD 1x 1.6TB 12G SAS SSD 15x 1.2TB 12G SATA HDD <p>Encrypted Drives (SED)</p> <ul style="list-style-type: none"> 1x 240GB 6G SATA SSD 1x 1.6TB 12G SAS SSD 15x 1.2TB 12G SATA HDD

*UCS Fabric Interconnects sind für jedes neue HyperFlex System notwendig! Auch dann, wenn Erweiterungen über bestehende FI Ports hinaus gehen.

Fabric Interconnects and Memory

Generation	Fabric SKUs	Fabric Interconnect Konfiguration (nicht als Stand-alone verfügbar)
3 rd Generation	HX-SP-FI6332	<ul style="list-style-type: none"> HX 6332 1RU FI/No PSU/32 QSFP+
3 rd Generation	HX-SP-FI6332-16UP	<ul style="list-style-type: none"> HX 6332-16UP FI/No PSU/24 QSFP+ 16 PT
2 nd Generation	UCS-HX-FI48P	<ul style="list-style-type: none"> Pair of 6248 FI w/ 12 port Licenses Optics (8x-8Gbps Fibre Channel SW SFP+LC; 8x-10GBase-SR SFP Module) 4x 6248UP Power Supply, 4x Power Cables
2 nd Generation	UCS-HX-FI96P	<ul style="list-style-type: none"> Pair of 6296 FI w/ 18 port Licenses Optics (8x-8Gbps Fibre Channel SW SFP+LC; 8x-10GBase-SR SFP Module) 4x 6296UP Power Supply, 4x Power Cables

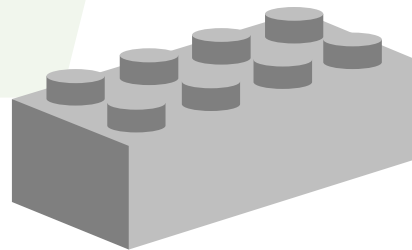
Kabel SKUs	Beschreibung
SFP-H10GB-CU3M	10GBASE-CU SFP + Cable 3 Meter
CVR-QSFP-SFP10G	QSFP to SFP10G adapter
QSFP-H40G-CU3M	40GBASE-CR4 Passive Copper Cable, 3m

Memory SKUs	Konfiguration (nicht als Stand-alone verfügbar)
HX-SP-M16G1-RSH	16GB DDR4-2666-MHz RDIMM/PC4-23100/single rank/x4/1.2v
HX-SP-M32G2-RSH	32GB DDR4-2666-MHz RDIMM/PC4-23100/dual rank/x4/1.2v

**Kabel müssen im CCW hinzugefügt werden wenn FI ausgewählt sind

M4 Angebote

Smart Play HyperFlex All-Flash Cloud Center



HyperFlex with CloudCenter Bundles



HX220c All Flash
High Performance in Small Footprint (Databases, VDI, VSI)



HX240c All Flash
High Performance with High Density (Database, VDI, VSI, Test/Dev)



HX220c Hybrid Smallest Footprint (VDI, VSI, ROBO)



HX240c Hybrid Capacity-Heavy (VDI, VSI, Test/Dev)

PID	HXC-AFC220M4V-FI	HXC-AFC240M4V-FI	HXC-HFC220M4-FI	HXC-HFC240M4-FI
Includes	3-8x Nodes HXAF220c 2x 6248 or 6296 Fabric Int. HX Data Platform (1, 3, 5 yr) CloudCenter 100VM (1, 3, 5 yr)	3-8x Nodes HXAF240c 2x 6248 or 6296 Fabric Int. HX Data Platform (1, 3, 5 yr) CloudCenter 200VM (1, 3, 5 yr)	3-8x Nodes HX220c 2x 6248 or 6296 Fabric Int. HX Data Platform (1, 3, 5 yr) CloudCenter 100VM (1, 3, 5 yr)	2x 6248 or 6296 Fabric Int. HX Data Platform (1, 3, 5 yr) CloudCenter 200VM (1, 3, 5 yr)
Expansion PID	HXC-AFC220M4-EXP	HXC-AFC240M4-EXP	HXC-HFC220M4-EXP	HXC-HFC240M4-EXP
Includes	2x Nodes SP HXAF220c HX Data Platform (1, 3, 5 yr) CloudCenter 100VM (1, 3, 5 yr)	2x Nodes SP HXAF240c HX Data Platform (1, 3, 5 yr) CloudCenter 100VM (1, 3, 5 yr)	2x Nodes SP HX220c HX Data Platform (1, 3, 5 yr) CloudCenter 100VM (1, 3, 5 yr)	2x Nodes SP HX220c HX Data Platform (1, 3, 5 yr) CloudCenter 100VM (1, 3, 5 yr)

HyperFlex mit CloudCenter Bundle Detail

HyperFlex SKUs	HxFC Node Konfiguration	
HXC-AFC220M4V-FI HyperFlexAll Flash CloudCenter100VM	<ul style="list-style-type: none"> 2x Intel® Xeon® Processor E5-2630 v4 2.20 GHz, 10-core, 85W, 20MB cache 256GB DDR4 RDIMM (8x 32GB 2400 MHz) Cisco Virtual Interface Card 1227 MLOM VMware vSphere Enterprise Plus (Optional) Cisco HX Data Platform SW subscription 	<ul style="list-style-type: none"> Cisco 12 Gbps Modular SAS HBA Card 2x 770W PSU, 2x 64GB SD Card 6x 960GB 2.5 Inch Ent Value 6G SATA SSD 1x 120GB 2.5 inch Ent Value 6G SATA SSD 1x 800GB 2.5 inch Ent Performance 12G SAS SSD 2x-10GBase-CU SFP +3 Meter Cable
HXC-AFC240M4V-FI HyperFlexAll Flash CloudCenter200VM	<ul style="list-style-type: none"> 2x Intel® Xeon® Processor E5-2630 v4 2.20 GHz, 10-core, 85W, 20MB cache 256GB DDR4 RDIMM (8x 32GB 2400 MHz) Cisco Virtual Interface Card 1227 MLOM VMware vSphere Enterprise Plus (Optional) Cisco HX Data Platform SW subscription 	<ul style="list-style-type: none"> Cisco 12 Gbps Modular SAS HBA Card 2x 1200W PSU, 2x 64GB SD Card 10x 960GB 2.5 Inch Ent Value 6G SATA SSD 1x 120GB 2.5 inch Ent Value 6G SATA SSD 1x 800GB 2.5 inch Ent Performance 12G SAS SSD 2x-10GBase-CU SFP +3 Meter Cable
HXC-HFC220M4-FI HyperFlexHybrid CloudCenter100VM	<ul style="list-style-type: none"> 2x Intel® Xeon® Processor E5-2630 v4 2.20 GHz, 10-core, 85W, 20MB cache 256GB DDR4 RDIMM (8x 32GB 2400 MHz) Cisco Virtual Interface Card 1227 MLOM VMware vSphere Enterprise Plus (Optional) Cisco HX Data Platform SW subscription 	<ul style="list-style-type: none"> Cisco 12 Gbps Modular SAS HBA Card 2x 770W PSU, 2x 64GB SD Card 1x 480GB 2.5 Inch Ent Performance 6G SATA SSD 6x 1.2TB 12G SAS 10K RPM SFF HDD 1x 120GB 2.5 inch Ent Performance 6G SATA SSD 2x-10GBase-CU SFP +3 Meter Cable
HXC-HFC240M4-FI HyperFlexHybrid CloudCenter200VM	<ul style="list-style-type: none"> 2x Intel® Xeon® Processor E5-2630 v4 2.20 GHz, 10-core, 85W, 20MB cache 256GB DDR4 RDIMM (8x 32GB 2400 MHz) Cisco Virtual Interface Card 1227 MLOM VMware vSphere Enterprise Plus (Optional) Cisco HX Data Platform SW subscription 	<ul style="list-style-type: none"> Cisco 12 Gbps Modular SAS HBA Card 2x 1200W PSU, 2x 64GB SD Card 1x 1.6TB 2.5 Inch Ent Performance 6G SATA SSD 11x 1.2TB 12G SAS 10K RPM SFF HDD 1x 120GB 2.5 inch Ent Performance 6G SATA SSD 2x-10GBase-CU SFP +3 Meter Cable

Appliance Bundles enthalten:

- **HX Nodes:** Mindestens 3, maximal 8 Nodes müssen ausgewählt werden
- SW Subscription – HXDP und ECS/ Cloud Management
- **FI Paar** (6248 oder 6296 Port Fabric Interconnects)

HyperFlex mit CloudCenter Expansion Pack

HyperFlex SKUs	HxFC System Node Konfiguration	
HXC-AFC220M4-EXP HyperFlexAll Flash CloudCenter100VM	<ul style="list-style-type: none"> • 2x Intel® Xeon® Processor E5-2630 v4 • 2.20 GHz, 10-core, 85W, 20MB cache • 256GB DDR4 RDIMM (8x 32GB 2400 MHz) • Cisco Virtual Interface Card 1227 MLOM • VMware vSphere Enterprise Plus (Optional) • Cisco HX Data Platform SW subscription 	<ul style="list-style-type: none"> • Cisco 12 Gbps Modular SAS HBA Card • 2x 770W PSU, 2x 64GB SD Card • 6x 960GB 2.5 Inch Ent Value 6G SATA SSD • 1x 120GB 2.5 inch Ent Value 6G SATA SSD • 1x 800GB 2.5 inch Ent Performance 12G SAS SSD • 2x-10GBase-CU SFP +3 Meter Cable
HXC-AFC240M4-EXP HyperFlexAll Flash CloudCenter100VM	<ul style="list-style-type: none"> • 2x Intel® Xeon® Processor E5-2630 v4 • 2.20 GHz, 10-core, 85W, 20MB cache • 256GB DDR4 RDIMM (8x 32GB 2400 MHz) • Cisco Virtual Interface Card 1227 MLOM • VMware vSphere Enterprise Plus (Optional) • Cisco HX Data Platform SW subscription 	<ul style="list-style-type: none"> • Cisco 12 Gbps Modular SAS HBA Card • 2x 1200W PSU, 2x 64GB SD Card • 10x 960GB 2.5 Inch Ent Value 6G SATA SSD • 1x 120GB 2.5 inch Ent Value 6G SATA SSD • 1x 800GB 2.5 inch Ent Performance 12G SAS SSD • 2x-10GBase-CU SFP +3 Meter Cable
HXC-HFC220M4-EXP HyperFlexHybrid CloudCenter100VM	<ul style="list-style-type: none"> • 2x Intel® Xeon® Processor E5-2630 v4 • 2.20 GHz, 10-core, 85W, 20MB cache • 256GB DDR4 RDIMM (8x 32GB 2400 MHz) • Cisco Virtual Interface Card 1227 MLOM • VMware vSphere Enterprise Plus (Optional) • Cisco HX Data Platform SW subscription 	<ul style="list-style-type: none"> • Cisco 12 Gbps Modular SAS HBA Card • 2x 770W PSU, 2x 64GB SD Card • 1x 480GB 2.5 Inch Ent Performance 6G SATA SSD • 6x 1.2TB 12G SAS 10K RPM SFF HDD • 1x 120GB 2.5 inch Ent Performance 6G SATA SSD • 2x-10GBase-CU SFP +3 Meter Cable
HXC-HFC240M4-EXP HyperFlexHybrid CloudCenter100VM	<ul style="list-style-type: none"> • 2x Intel® Xeon® Processor E5-2630 v4 • 2.20 GHz, 10-core, 85W, 20MB cache • 256GB DDR4 RDIMM (8x 32GB 2400 MHz) • Cisco Virtual Interface Card 1227 MLOM • VMware vSphere Enterprise Plus (Optional) • Cisco HX Data Platform SW subscription 	<ul style="list-style-type: none"> • Cisco 12 Gbps Modular SAS HBA Card • 2x 1200W PSU, 2x 64GB SD Card • 1x 1.6TB 2.5 Inch Ent Performance 6G SATA SSD • 11x 1.2TB 12G SAS 10K RPM SFF HDD • 1x 120GB 2.5 inch Ent Performance 6G SATA SSD • 2x-10GBase-CU SFP +3 Meter Cable

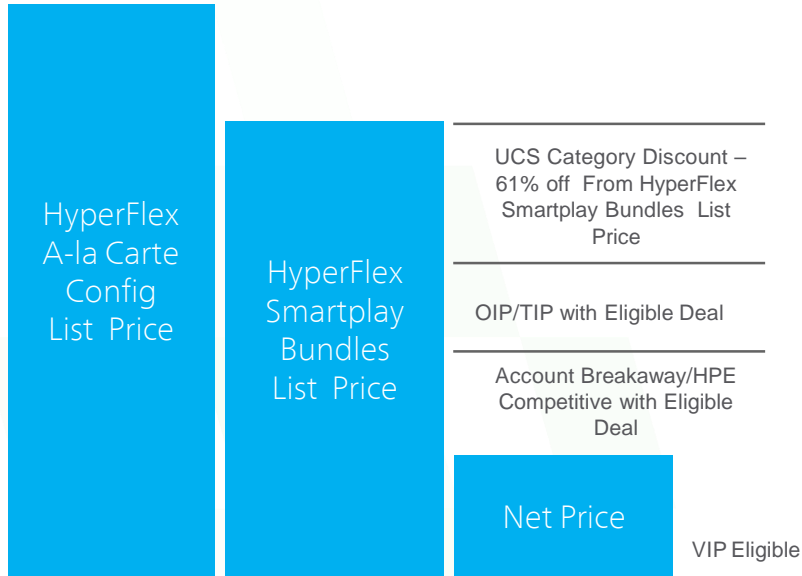
Appliance Bundles enthalten:

- **HX Nodes:** 2 nodes je Pack
- SW Subscription – HXDP und ECS/ Cloud Management

Special Bundle Discount Explained

Cisco HyperFlex

Hardware und Software Subscription

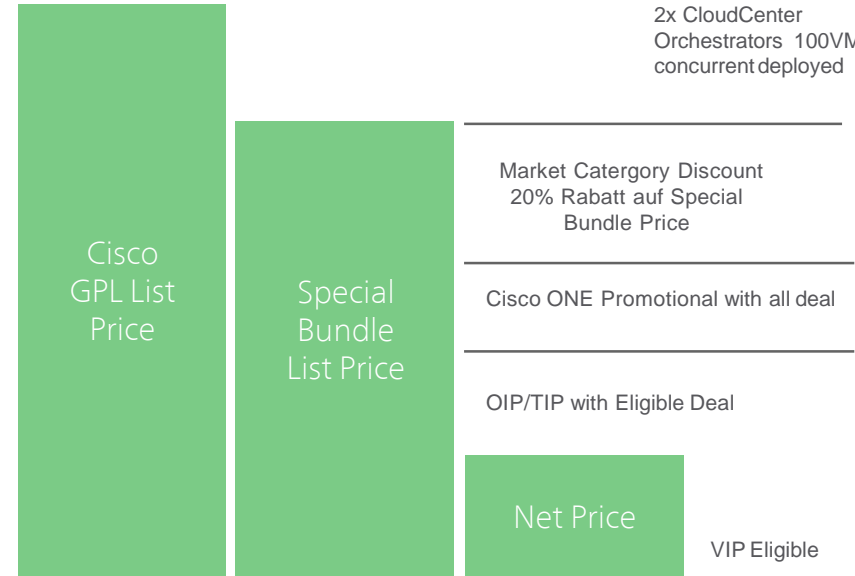


Cisco Enterprise Cloud Suite – Cloud Management

Software Subscription

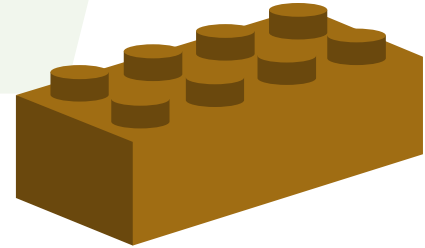
ECS-CMGT Special Bundle Price achieves Parity Discount

Beinhaltet:
1x CloudCenter Manager
2x CloudCenter Orchestrators 100VM concurrent deployed



Smart Play HyperFlex All-Flash

Cisco SP HyperFlex All-Flash HX220c & HX240c Serie



Cisco SP HX-Series All-Flash Bundles - HX220c

HyperFlex Artikel	All-Flash HyperFlex System Konfiguration	
HX220c Value HXAF-SP-220M4V-FI	<ul style="list-style-type: none"> 2 x Intel® Xeon® Processor E5-2630 v4 2.20 GHz, 10-core, 85W, 20 MB cache 256 GB DDR4 RDIMM (8 x 32 GB 2400 MHz) Cisco Virtual Interface Card 1227 MLOM VMware vSphere Enterprise Plus (Optional) Cisco HX Data Platform SW subscription 	<ul style="list-style-type: none"> Cisco 12 Gbps Modular SAS HBA Card 2 x 770W PSU, 2 x 64 GB SD Card 6 x 960 GB 2.5 Inch Ent Value 6G SATA SSD 1 x 120 GB 2.5 inch Ent Value 6G SATA SSD 1 x 800 GB 2.5 inch Ent Performance 12G SAS SSD 2 x-10GBase-CU SFP +3 Meter Cable
HX220c Capacity HXAF-SP-220M4C-FI	<ul style="list-style-type: none"> 2 x Intel® Xeon® Processor E5-2650 v4 2.20 GHz, 12-core, 105W, 30 MB cache 256 GB DDR4 RDIMM (8 x 32 GB 2133 MHz) Cisco Virtual Interface Card 1227 MLOM VMware vSphere Enterprise Plus (Optional) Cisco HX Data Platform SW subscription 	<ul style="list-style-type: none"> Cisco 12 Gbps Modular SAS HBA Card 2 x 770W PSU, 2 x 64 GB SD Card 6 x 3.8 TB 2.5 Inch Ent Value 6G SATA SSD 1 x 120 GB 2.5 inch Ent Value 6G SATA SSD 1 x 800 GB 2.5 inch Ent Performance 12G SAS SSD 2 x-10GBase-CU SFP +3 Meter Cable
HX220c Performance HXAF-SP-220M4P-FI	<ul style="list-style-type: none"> 2 x Intel® Xeon® Processor E5-2690 v4 2.60 GHz, 14-core, 135W, 35 MB cache 512 GB DDR4 RDIMM (16 x 32 GB 2400 MHz) Cisco Virtual Interface Card 1227 MLOM VMware vSphere Enterprise Plus (Optional) Cisco HX Data Platform SW subscription 	<ul style="list-style-type: none"> Cisco 12 Gbps Modular SAS HBA Card 2 x 770W PSU, 2 x 64 GB SD Card 6 x 3.8 TB 2.5 Inch Ent Value 6G SATA SSD 1 x 120 GB 2.5 inch Ent Value 6G SATA SSD 1 x 800 GB 2.5 inch Ent Performance 12G SAS SSD 2 x-10GBase-CU SFP +3 Meter Cable

WICHTIG: All-Flash HX Nodes und Standard-Nodes (HDD/SDD) können nicht im gleichen Cluster laufen

Appliance Bundles enthalten:

- **Nodes:** Mindestens 3, maximal 16 Nodes müssen ausgewählt werden
- SW Subscription
- **FI Paar** (6248 oder 6296 Port Fabric Interconnects)

Cisco SP HX-Series All-Flash Bundles - HX240c

HyperFlex Artikel	All Flash HyperFlex System configuration	
HX240c Value HXAF-SP-240M4V-FI	<ul style="list-style-type: none"> 2 x Intel® Xeon® Processor E5-2630 v4 2.20 GHz, 10-core, 85W, 20 MB cache 256 GB DDR4 RDIMM (8 x 32 GB 2400 MHz) Cisco Virtual Interface Card 1227 MLOM VMware vSphere Enterprise Plus (Optional) Cisco HX Data Platform SW subscription 	<ul style="list-style-type: none"> Cisco 12 Gbps Modular SAS HBA Card 2 x 1200W PSU, 2 x 64 GB SD Card 10 x 960 GB 2.5 Inch Ent Value 6G SATA SSD 1 x 120 GB 2.5 inch Ent Value 6G SATA SSD 1 x 800 GB 2.5 inch Ent Performance 12G SAS SSD 2 x-10GBase-CU SFP +3 Meter Cable
HX240c Capacity HXAF-SP-240M4C-FI	<ul style="list-style-type: none"> 2 x Intel® Xeon® Processor E5-2650 v4 2.20 GHz, 12-core, 105W, 30 MB cache 256 GB DDR4 RDIMM (8 x 32 GB 2133 MHz) Cisco Virtual Interface Card 1227 MLOM VMware vSphere Enterprise Plus (Optional) Cisco HX Data Platform SW subscription 	<ul style="list-style-type: none"> Cisco 12 Gbps Modular SAS HBA Card 2 x 1200W PSU, 2 x 64 GB SD Card 10 x 3.8 TB 2.5 Inch Ent Value 6G SATA SSD 1 x 120 GB 2.5 inch Ent Value 6G SATA SSD 1 x 800 GB 2.5 inch Ent Performance 12G SAS SSD 2 x-10GBase-CU SFP +3 Meter Cable
HX240c Performance HXAF-SP-240M4P-FI	<ul style="list-style-type: none"> 2 x Intel® Xeon® Processor E5-2690 v4 2.60 GHz, 14-core, 135W, 35 MB cache 512 GB DDR4 RDIMM (16 x 32 GB 2400 MHz) Cisco Virtual Interface Card 1227 MLOM VMware vSphere Enterprise Plus (Optional) Cisco HX Data Platform SW subscription 	<ul style="list-style-type: none"> Cisco 12 Gbps Modular SAS HBA Card 2 x 1200W PSU, 2 x 64 GB SD Card 10 x 3.8 TB 2.5 Inch Ent Value 6G SATA SSD 1 x 120 GB 2.5 inch Ent Value 6G SATA SSD 1 x 800 GB 2.5 inch Ent Performance 12G SAS SSD 2 x-10GBase-CU SFP +3 Meter Cable

WICHTIG: All-Flash HX Nodes und Standard-Nodes (HDD/SDD) können nicht im gleichen Cluster laufen

Appliance Bundles enthalten:

- **Nodes:** Mindestens 3, maximal 16 Nodes müssen ausgewählt werden
- SW Subscription
- **FI Paar** (6248 oder 6296 Port Fabric Interconnects)

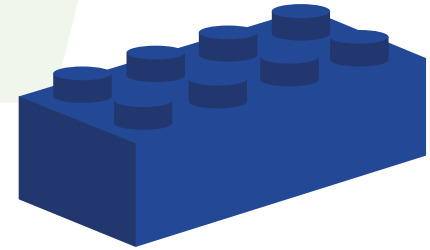
HyperFlex Artikel	Prozessor	RAM	Speicher	SD Karten
HXAF-SP-220M4-V	2 x Intel E5-2630	256 GB (8 x 32GB DDR4)	6 x SSD 960GB; 1 x SSD 120GB; 1 x SSD 800GB	2 x 64 GB
HXAF-SP-220M4-C	2 x Intel E5-2650	256 GB (8 x 32GB DDR4)	6 x SSD 3.8TB; 1 x SSD 120GB; 1 x SSD 800GB	2 x 64 GB
HXAF-SP-220M4-P	2 x Intel E5-2690	512 GB (16 x 32GB DDR4)	6 x SSD 3.8TB; 1 x SSD 120GB; 1 x SSD 800GB	2 x 64 GB
HXAF-SP-240M4-V	2 x Intel E5-2630	256 GB (8 x 32GB DDR4)	10 x SSD 960GB; 1 x SSD 120GB; 1 x SSD 800GB	2 x 64 GB
HXAF-SP-240M4-C	2 x Intel E5-2650	256 GB (8 x 32GB DDR4)	10 x SSD 3.8TB; 1 x SSD 120GB; 1 x SSD 800GB	2 x 64 GB
HXAF-SP-240M4-P	2 x Intel E5-2690	512 GB (16 x 32GB DDR4)	10 x SSD 3.8TB; 1 x SSD 120GB; 1 x SSD 800GB	2 x 64 GB

WICHTIG: All-Flash HX Nodes und Standard-Nodes (HDD/SDD) können nicht im gleichen Cluster laufen

2x-10GBase-CU SFP + 3 Meter Kabel sind in jedem Node enthalten

Smart Play HyperFlex Hybrid

Cisco SP HyperFlex Hybrid HX220c & HX240c Serie



Cisco SP HX-Series Hybrid Bundles - HX220c

HyperFlex Artikel	All-Flash HyperFlex System Configuration	
HX220c Entry HX-SP-220M4E1-FI	<ul style="list-style-type: none"> 2 x Intel® Xeon® Processor E5-2609 v4 1.70 GHz, 8-core, 85W, 20MB cache 128GB DDR4 RDIMM (8 x 16GB 2400 MHz) Cisco Virtual Interface Card 1227 MLOM VMware vSphere Enterprise Plus (Optional) Cisco HX Data Platform SW subscription 	<ul style="list-style-type: none"> Cisco 12 Gbps Modular SAS HBA Card 2 x 770W PSU, 2x 64GB SD Card 1 x 480GB 2.5 Inch Ent Performance 6G SATA SSD 6 x 1.2TB 12G SAS 10K RPM SFF HDD 1 x 120GB 2.5 inch Ent Performance 6G SATA SSD 2 x-10GBase-CU SFP +3 Meter Cable
HX220c Entry Plus HX-SP-220M4E2-FI	<ul style="list-style-type: none"> 2 x Intel® Xeon® Processor E5-2630 v4 2.20 GHz, 10-core, 85W, 20MB cache 256GB DDR4 RDIMM (8 x 32GB 2400 MHz) Cisco Virtual Interface Card 1227 MLOM VMware vSphere Enterprise Plus (Optional) Cisco HX Data Platform SW subscription 	<ul style="list-style-type: none"> Cisco 12 Gbps Modular SAS HBA Card 2 x 770W PSU, 2x 64GB SD Card 1 x 480GB 2.5 Inch Ent Performance 6G SATA SSD 6 x 1.2TB 12G SAS 10K RPM SFF HDD 1 x 120GB 2.5 inch Ent Performance 6G SATA SSD 2 x-10GBase-CU SFP +3 Meter Cable
HX220c Value HX-SP-220M4V1-FI	<ul style="list-style-type: none"> 2 x Intel® Xeon® Processor E5-2650 v4 2.20 GHz, 12-core, 105W, 30MB cache 384GB DDR4 RDIMM (12 x 32GB 2400 MHz) Cisco Virtual Interface Card 1227 MLOM VMware vSphere Enterprise Plus (Optional) Cisco HX Data Platform SW subscription 	<ul style="list-style-type: none"> Cisco 12 Gbps Modular SAS HBA Card 2 x 770W PSU, 2x 64GB SD Card 1 x 480GB 2.5 Inch Ent Performance 6G SATA SSD 6 x 1.2TB 12G SAS 10K RPM SFF HDD 1 x 120GB 2.5 inch Ent Performance 6G SATA SSD 2 x-10GBase-CU SFP +3 Meter Cable
HX220c Performance HX-SP-220M4P1-FI	<ul style="list-style-type: none"> 2 x Intel® Xeon® Processor E5-2690 v4 2.60 GHz, 14-core, 135W, 35MB cache 512GB DDR4 RDIMM (16 x 32GB 2400 MHz) Cisco Virtual Interface Card 1227 MLOM VMware vSphere Enterprise Plus (Optional) Cisco HX Data Platform SW subscription 	<ul style="list-style-type: none"> Cisco 12 Gbps Modular SAS HBA Card 2 x 770W PSU, 2x 64GB SD Card 1 x 480GB 2.5 Inch Ent Performance 6G SATA SSD 6 x 1.2TB 12G SAS 10K RPM SFF HDD 1 x 120GB 2.5 inch Ent Performance 6G SATA SSD 2 x-10GBase-CU SFP +3 Meter Cable

Appliance Bundles enthalten:

- **Nodes:** Mindestens 3, maximal 8 Nodes müssen ausgewählt werden
- SW Subscription
- **FI Paar** (6248 oder 6296 Port Fabric Interconnects)

Cisco SP HX-Series Hybrid Bundles - HX220c

HyperFlex Artikel	All-Flash HyperFlex System Konfiguration	
HX220c Edge One HX-SP-220M4-EDGE1	<ul style="list-style-type: none"> 1x Intel® Xeon® Processor E5-2630 v4 2.20 GHz, 10-core, 85W, 20MB cache 128GB DDR4 RDIMM (8x 16GB 2400 MHz) Cisco Virtual Interface Card 1227 MLOM VMware vSphere Enterprise Plus (Optional) Cisco HX Data Platform SW subscription 	<ul style="list-style-type: none"> Cisco 12 Gbps Modular SAS HBA Card 2x 770W PSU, 2x 64GB SD Card 1x 480GB 2.5 Inch Ent Performance 6G SATA SSD 3x 1.2TB 12G SAS 10K RPM SFF HDD 1x 120GB 2.5 inch Ent Performance 6G SATA SSD 2x-10GBase-CU SFP +3 Meter Cable
HX220c Edge Two HX-SP-220M4-EDGE2	<ul style="list-style-type: none"> 2x Intel® Xeon® Processor E5-2630 v4 2.20 GHz, 10-core, 85W, 20MB cache 128GB DDR4 RDIMM (8x 16GB 2400 MHz) Cisco Virtual Interface Card 1227 MLOM VMware vSphere Enterprise Plus (Optional) Cisco HX Data Platform SW subscription 	<ul style="list-style-type: none"> Cisco 12 Gbps Modular SAS HBA Card 2x 770W PSU, 2x 64GB SD Card 1x 480GB 2.5 Inch Ent Performance 6G SATA SSD 6x 1.2TB 12G SAS 10K RPM SFF HDD 1x 120GB 2.5 inch Ent Performance 6G SATA SSD 2x-10GBase-CU SFP +3 Meter Cable

- **Kein FI´s benötigt**
- Standalone kann über CTO bezogen werden

Cisco SP HX-Series Hybrid Bundles - HX240c

HyperFlex Artikel	All-Flash HyperFlex System Configuration	
HX240c Entry HX-SP-240M4E1-FI	<ul style="list-style-type: none"> 2 x Intel® Xeon® Processor E5-2609 v4 1.70 GHz, 8-core, 85W, 20MB cache 256GB DDR4 RDIMM (8 x 32GB 2400 MHz) Cisco Virtual Interface Card 1227 MLOM VMware vSphere Enterprise Plus (Optional) Cisco HX Data Platform SW subscription 	<ul style="list-style-type: none"> Cisco 12 Gbps Modular SAS HBA Card 2 x 1200W PSU, 2 x 64GB SD Card 1 x 1.6TB 2.5 Inch Ent Performance 6G SATA SSD 11 x 1.2TB 12G SAS 10K RPM SFF HDD 1 x 120GB 2.5 inch Ent Performance 6G SATA SSD 2 x-10GBase-CU SFP +3 Meter Cable
HX240c Entry Plus HX-SP-240M4E2-FI	<ul style="list-style-type: none"> 2 x Intel® Xeon® Processor E5-2630 v4 2.20 GHz, 10-core, 85W, 20MB cache 256GB DDR4 RDIMM (8 x 32GB 2400 MHz) Cisco Virtual Interface Card 1227 MLOM VMware vSphere Enterprise Plus (Optional) Cisco HX Data Platform SW subscription 	<ul style="list-style-type: none"> Cisco 12 Gbps Modular SAS HBA Card 2 x 1200W PSU, 2 x 64GB SD Card 1 x 1.6TB 2.5 Inch Ent Performance 6G SATA SSD 11 x 1.2TB 12G SAS 10K RPM SFF HDD 1 x 120GB 2.5 inch Ent Performance 6G SATA SSD 2 x-10GBase-CU SFP +3 Meter Cable
HX240c Value HX-SP-240M4V1-FI	<ul style="list-style-type: none"> 2 x Intel® Xeon® Processor E5-2650 v4 2.20 GHz, 12-core, 105W, 30MB cache 384GB DDR4 RDIMM (12 x 32GB 2400 MHz) Cisco Virtual Interface Card 1227 MLOM VMware vSphere Enterprise Plus (Optional) Cisco HX Data Platform SW subscription 	<ul style="list-style-type: none"> Cisco 12 Gbps Modular SAS HBA Card 2 x 1200W PSU, 2 x 64GB SD Card 1 x 1.6TB 2.5 Inch Ent Performance 6G SATA SSD 15 x 1.2TB 12G SAS 10K RPM SFF HDD 1 x 120GB 2.5 inch Ent Performance 6G SATA SSD 2 x-10GBase-CU SFP +3 Meter Cable
HX240c Performance HX-SP-240M4P1-FI	<ul style="list-style-type: none"> 2 x Intel® Xeon® Processor E5-2690 v4 2.60 GHz, 14-core, 135W, 35MB cache 512GB DDR4 RDIMM (16 x 32GB 2400 MHz) Cisco Virtual Interface Card 1227 MLOM VMware vSphere Enterprise Plus (Optional) Cisco HX Data Platform SW subscription 	<ul style="list-style-type: none"> Cisco 12 Gbps Modular SAS HBA Card 2 x 1200W PSU, 2 x 64GB SD Card 1 x 1.6TB 2.5 Inch Ent Performance 6G SATA SSD 15 x 1.2TB 12G SAS 10K RPM SFF HDD 1 x 120GB 2.5 inch Ent Performance 6G SATA SSD 2 x-10GBase-CU SFP +3 Meter Cable

Appliance Bundles enthalten:

- **Nodes:** Mindestens 3, maximal 8 Nodes müssen ausgewählt werden
- SW Subscription
- **FI Paar** (6248 oder 6296 Port Fabric Interconnects)

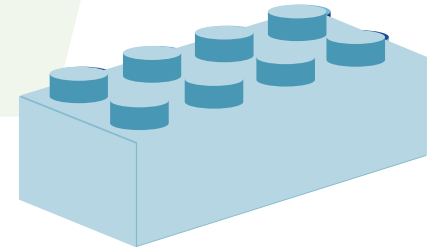
HyperFlex Artikel	Prozessor	RAM	Speicher	SD Karten
HX-SP-220M4-E1	2x Intel E5-2609	128 GB (8 x 16GB DDR4)	1 x SSD 480GB; 1 x SSD 120GB; 6 x HDD 1.2TB	2 x 64 GB
HX-SP-220M4-E2	2 x Intel E5-2630	256 GB (8 x 32GB DDR4)	1 x SSD 480GB; 1 x SSD 120GB; 6 x HDD 1.2TB	2 x 64 GB
HX-SP-220M4-V1	2 x Intel E5-2650	384 GB (12 x 32GB DDR4)	1 x SSD 480GB; 1 x SSD 120GB; 6 x HDD 1.2TB	2 x 64 GB
HX-SP-220M4-P1	2 x Intel E5-2690	512 GB (16 x 32GB DDR4)	1 x SSD 480GB; 1 x SSD 120GB; 6 x HDD 1.2TB	2 x 64 GB
HX-SP-240M4-E1	2 x Intel E5-2609	256 GB (8 x 32GB DDR4)	1 x SSD 1.6TB; 1 x SSD 120GB; 11 x HDD 1.2TB	2 x 64 GB
HX-SP-240M4-E2	2 x Intel E5-2630	256 GB (8 x 32GB DDR4)	1 x SSD 1.6TB; 1 x SSD 120GB; 11 x HDD 1.2TB	2 x 64 GB
HX-SP-240M4-V1	2 x Intel E5-2650	384 GB (12 x 32GB DDR4)	1 x SSD 1.6TB; 1 x SSD 120GB; 15 x HDD 1.2TB	2 x 64 GB
HX-SP-240M4-P1	2 x Intel E5-2690	512 GB (16 x 32GB DDR4)	1 x SSD 1.6TB; 1 x SSD 120GB; 15 x HDD 1.2TB	2 x 64 GB

WICHTIG: All-Flash HX Nodes und Standard-Nodes (HDD/SDD) können nicht im gleichen Cluster laufen

2x-10GBase-CU SFP + 3 Meter Kabel sind in jedem Node enthalten

Smart Play HyperFlex Hybrid EDGE/ROBO

Cisco SP HyperFlex Hybrid HX220c EDGE Bundles



Cisco SP HX-Series Hybrid EDGE/ROBO Bundles - HX220c

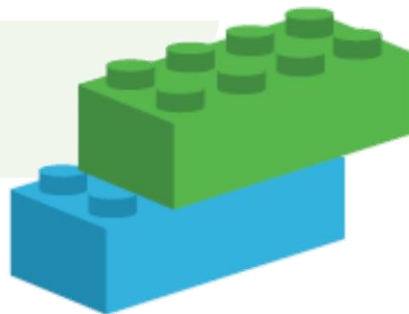
HyperFlex Artikel	All-Flash HyperFlex System Konfiguration	
HX220c EdgeOne HX-SP-220M4-EDGE1	<ul style="list-style-type: none"> 1 x Intel® Xeon® Processor E5-2630 v4 2.20 GHz, 10-core, 85W, 20MB cache 128 GB DDR4 RDIMM (8 x 16 GB 2400 MHz) Cisco Virtual Interface Card 1227 MLOM VMware vSphere Enterprise Plus (Optional) Cisco HX Data Platform SW subscription 	<ul style="list-style-type: none"> Cisco 12 Gbps Modular SAS HBA Card 2 x 770W PSU, 2x 64GB SD Card 1 x 480GB 2.5 Inch Ent Performance 6G SATA SSD 3 x 1.2TB 12G SAS 10K RPM SFF HDD 1 x 120GB 2.5 inch Ent Performance 6G SATA SSD 2 x-10GBase-CU SFP +3 Meter Cable
HX220c Edge Two HX-SP-220M4-EDGE2	<ul style="list-style-type: none"> 1 x Intel® Xeon® Processor E5-2630 v4 2.20 GHz, 10-core, 85W, 20MB cache 128 GB DDR4 RDIMM (8 x 16 GB 2400 MHz) Cisco Virtual Interface Card 1227 MLOM VMware vSphere Enterprise Plus (Optional) Cisco HX Data Platform SW subscription 	<ul style="list-style-type: none"> Cisco 12 Gbps Modular SAS HBA Card 2 x 770W PSU, 2x 64GB SD Card 1 x 480GB 2.5 Inch Ent Performance 6G SATA SSD 6 x 1.2TB 12G SAS 10K RPM SFF HDD 1 x 120GB 2.5 inch Ent Performance 6G SATA SSD 2 x-10GBase-CU SFP +3 Meter Cable

Hinweise HyperFlex EDGE:

- Keine Fabric Interconnects benötigt
- Kann Standalone als CTO konfiguriert werden

Smart Play HyperFlex

Fabric Interconnects & Speicher



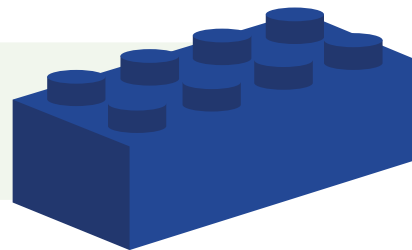
HyperFlex Fabric Interconnects & Storage

FI Artikel	FABRIC INTERCONNECT KONFIGUARTION (Nicht als Stand-alone verfügbar)
2X- 48 Port FI UCS-HX-FI48P	<ul style="list-style-type: none"> • 2 x 6248 FI w/ 12 port Licenses • Optics (8 x 8 Gbps Fibre Channel SW SFP+LC; 8 x-10GBase-SR SFP Module) • 4 x 6248UP Netzteile, 4 x Stromkabel
2X- 96 Port FI UCS-HX-FI96P	<ul style="list-style-type: none"> • 2 x 6296 FI w/ 18 port Licenses • Optics (8 x 8 Gbps Fibre Channel SW SFP+LC; 8 x-10GBase-SR SFP Module) • 4 x 6296UP Netzteile, 4 x Stromkabel

Speicherkit Artikel	KONFIGUARTION
HDD Storage HX-SP-D1P2T-4X	<ul style="list-style-type: none"> • 1.2 TB 12G SAS 10K rpm SFF HDD (4 Pack)
HX-SP-D1P2T-8X	<ul style="list-style-type: none"> • 1.2 TB 12G SAS 10K rpm SFF HDD (8 Pack)

Hinweis: 3 Meter 10GBase-CU SFP + Kabel sind ab sofort bei den Nodes enthalten und nicht mehr bei den Fabric Interconnects

Weiterführende Partnerinformationen



Allgemeine HyperFlex Informationen

www.cisco.com/go/hyperflex

SmartPlay HyperFlex Informationen

<http://www.cisco.com/c/en/us/partners/sell-integrate-consult/incentives-promotions/smartplays.html>

Gerne stehen wir Ihnen für Ihre weiteren Fragen zur Verfügung.
Kontaktieren Sie uns:

Marcel Weber

Business Development Manager DC&V
Mobile: +49 30 346 03 507
marcel.weber@comstor.com

Peter Dejakum

IT Pre-Sales Consultant DC&V
Office: +49 30 346 03 554
peter.dejakum@comstor.com

Irrtümer und Änderungen seitens des Herstellers vorbehalten.



Comstor
Delivering Results Together
powered by WestconGroup

 Cloud  Global Deployment  Services

 Security  UCC  Networking  Data Center