

SmartPlay Select (SP)

November 2017

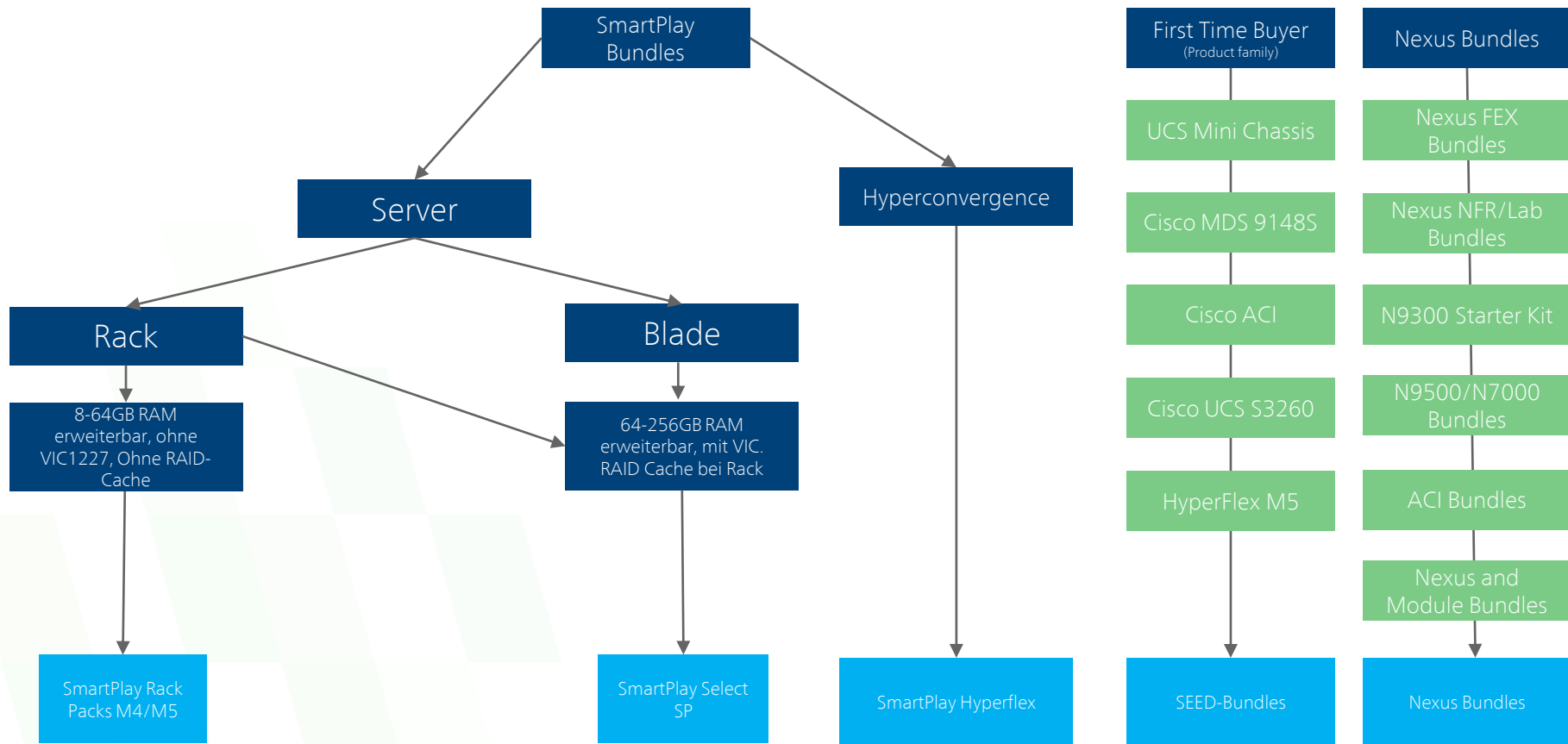


Comstor

Delivering Results Together
powered by WestconGroup

 CISCO

Distribution
Partner



Aktions- und Teilnahmebedingungen

	SMARTPLAY SELECT Generation M4	SMARTPLAY SELECT Generation M5	SmartPlay HyperFlex Generation M4	SmartPlay HyperFlex Generation M5	SmartPlay Rack Paks Generation M4	SmartPlay Rack Paks Generation M45	SEED Bundles	ECS/Cloud Management
Angebotphase gültig bis	27. Januar 2018	28. Juni 2018	27. Januar 2018	28. Juli 2018	Nicht bekannt	Nicht bekannt		
Bestellungen gültig bis	24 Februar 2018	25. August 2018	24. Februar 2018	25.08.2018	27. Januar 2018 oder solange die Distribution Lagerware hat	25. August 2018 oder solange die Distribution Lagerware hat	28. Juli 2018	
Max. Bestellmenge/ Kunde/ Qtr.	5 FI Pairs, 10 Chassis und 50 Server	5 FI Pairs, 10 Chassis und 50 Server	50 Appliances	50 Appliance	Nein	Nein	1 Produkt/ Bundle je Kunde	
Weitere Limitierung/ Kunde/ Qtr.	FIO:50; HDD:100; SSD:100	FIO:50; HDD:100; SSD:100	100 nodes; 200 HDDs	100 nodes; 200 HDDs	Nein	Nein	Nein	
FastTrack	Teilweise enthalten	Nein	Nein	Nein	Teilweise enthalten	Teilweise enthalten	Nein	
New Account Breakaway	Bis zu 65%**	Bis zu 65%**	Bis zu 65%**	Bis zu 65%**	Bis zu 61%**	Bis zu 61%**	Nein	Bis zu 37%
SEEDIT	Nein	Nein	Nein	tbd	Nein	Nein	Bis zu 67%	Nein
OIP	Bis zu 62%	Bis zu 62%	Bis zu 62%	Bis zu 62%	Nur auf Optionen	Nur auf Optionen	Nein	Bis zu 37%
TIP	Bis zu 62%	Bis zu 62%	Bis zu 62%	Bis zu 62%	Nur auf Optionen	Nur auf Optionen	Nein	Bis zu 37%
SIP	Nein	Nein	Nein	Nein	Nur auf Optionen	Nur auf Optionen	Nein	Nein
VIP	Ja	Ja	Ja	Ja	Ja	Ja	Nein	Ja
DSA	Nein	Nein	Nein	Nein	Nein	Nein	Nein	Nein (DRP)
MDS Produkt	Bis zu 43%	Bis zu 43%	n/a	n/a	Nein	Nein	Bis zu 67%	n/a
Try and Buy	Ja**	Ja**	Ja**	Ja**	Nein	Nein	Nein	Ja
UCS Advantage Trade-In	Nein	Nein	Nein	Nein	Nein	Nein	Nein	Über NFR Programm
NFR (nicht für Wiederkauf)	Bis zu 67%	Bis zu 67%	Bis zu 67%	Bis zu 67%	Nein	Nein	Bis zu 67%	n/a

**Try and Buy kann nun mit NAB kombiniert werden. Es gelten die Try & Buy Teilnahmebedingungen. - NAB Discount für Volume Enterprise Cloud Suite beträgt 67%

Ihre Programm- Vorteile

- ▶ UCS Aktionsangebote zur Unterstützung Ihrer Neukundenakquise: Zeigen Sie Ihren Kunden den Mehrwert von end-to-end Data Center Architekturen und Lösungen basierend auf Cisco UCS.
- ▶ Unterstützen Sie Ihre UCS Kunden auch bei veränderten Anforderungen im Unternehmen mit den flexiblen UCS Architektur-Modulen.
- ▶ Verkürzen Sie Ihren Verkaufszyklus durch Cisco 's optimiertes Up-Front Pricing.
- ▶ Das Aktionsangebot ist mit allen bestehenden Preisregelungen abgestimmt und ist somit für Ihre Kunden einfach verständlich.

Änderungen

Was ist neu?

- Steigerung des Listenpreises der M4 Memory DIMMs und Bundles (gültig seit 04.11.2017)
- Änderung der Konfiguration der meisten M5 Blades und damit einhergehende Preissenkung
- 60 Tage Test des Cisco Workload Optimization Managers (CWOM) wurde zu den Blades und Racks hinzu gefügt

Bitte beachten!

- M5 CPU Angebote verfügbar
- Programm bis 27.01.2018 verlängert
- Software Defined Storage Bundles
- Preisänderungen bei Memory

Broadwell vs. Skylake CPU Vergleich

M5 Xeon CPU	CPU Clock Rate	CPU Cores	CPU Power Rating	CPU Cache	M4 V4 Xeon CPU	CPU Clock Rate	CPU Cores	CPU Power Rating	CPU Cache
3106	1.70 GHz	8	85W	11MB	E5-2609E	1.70 GHz	8	85W	20MB
4108	1.80 GHz	8	85W	11MB	E5-2620E	2.10 GHz	8	85W	20MB
4114	2.20 GHz	10	85W	13.75MB	E5-2630E	2.20 GHz	10	85W	20MB
5122	3.60 GHz	4	105W	16.5MB	E5-2637E	3.50 GHz	4	135W	15MB
6128	3.40 GHz	6	115W	19.25MB	E5-2643E	3.40 GHz	6	135W	20MB
5118	2.30 GHz	12	105W	16.5MB	E5-2650E	2.20 GHz	12	105W	30MB
5120	2.20 GHz	14	105W	19.25MB	E5-2660E	2.00 GHz	14	105W	35MB
6134	3.20 GHz	8	130W	24.75MB	E5-2667E	3.20 GHz	8	135W	25MB
6130	2.10 GHz	16	125W	22MB	E5-2680E	2.40 GHz	14	120W	35MB
	NA	NA	NA	NA	E5-2683E	2.10 GHz	16	120W	40MB
6132	2.10 GHz	14	140W	19.25MB					
6140	2.30 GHz	18	140W	24.75MB	E5-2690E	2.60 GHz	14	135W	35MB
6148	2.40 GHz	20	150W	27.5MB	E5-2697E	2.30 GHz	18	145W	45MB
6152	2.10 GHz	22	140W	30.25MB	E5-2698E	2.20 GHz	20	135W	50MB
8160	2.10 GHz	24	150W	33MB	E5-2699E	2.20 GHz	22	145W	55MB

Module: So funktioniert 's

B-Serie Blades



C-Serie
Rack Servers



Chassis



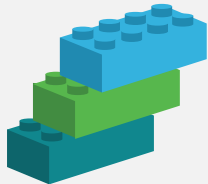
Fabric Interconnects



Cisco Software

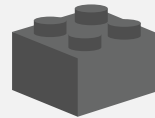


Select: Stellen Sie die einzelnen Server, Infrastruktur-Komponenten und Module flexibel nach Ihren Bedürfnissen zusammen



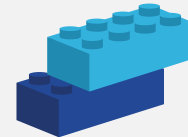
Pick 3

Klassischer Neukunde



Pick 1

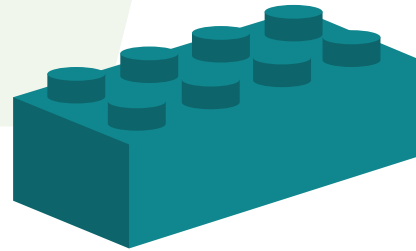
Neu- oder Bestandskunden:
Upgrades, Expansion, etc.



Pick 2

SmartPlay Select
M5 CPU Angebote

SmartPlay Select (M5)
Modul Blades B-Serie



B200M5 (Two-Socket EP)

BLADE SKU	BLADE KONFIGURATION	
B200M5 BASIC UCS-SP-B200M5-CB1	<ul style="list-style-type: none"> • 2x Intel® Xeon® Processor 3106 • 1.70 GHz, 8-core, 85W, 11MB cache • 64GB DDR4 RDIMM (4x 16GB 2666 MHz) 	<ul style="list-style-type: none"> • Cisco Virtual Interface Card 1340 modular LOM • 40 Gbps of I/O per Blade • 60 Day CWOM Trial License (Turbonomics)
B200M5 STANDARD ONE UCS-SP-B200M5-CS1	<ul style="list-style-type: none"> • 2x Intel® Xeon® Processor 4108 • 1.80 GHz, 8-core, 85W, 11MB cache • 96GB DDR4 RDIMM (6x 16GB 2666 MHz) 	<ul style="list-style-type: none"> • Cisco Virtual Interface Card 1340 modular LOM • 40 Gbps of I/O per Blade • 60 Day CWOM Trial License (Turbonomics)
B200M5 STANDARD TWO UCS-SP-B200M5-CS2	<ul style="list-style-type: none"> • 2x Intel® Xeon® Processor 4114 • 2.20 GHz, 10-core, 85W, 13.75MB cache • 96GB DDR4 RDIMM (6x 16GB 2666 MHz) 	<ul style="list-style-type: none"> • Cisco Virtual Interface Card 1340 modular LOM • 40 Gbps of I/O per Blade • 60 Day CWOM Trial License (Turbonomics)
B200M5 ADVANCED ONE UCS-SP-B200M5-CA1	<ul style="list-style-type: none"> • 2x Intel® Xeon® Processor 5118 • 2.30 GHz, 12-core, 105W, 16.5MB cache • 96GB DDR4 RDIMM (6x 16GB 2666 MHz) 	<ul style="list-style-type: none"> • Cisco Virtual Interface Card 1340 modular LOM • 40 Gbps of I/O per Blade • 60 Day CWOM Trial License (Turbonomics)
B200M5 ADVANCED TWO UCS-SP-B200M5-CA2	<ul style="list-style-type: none"> • 2x Intel® Xeon® Processor 5118 • 2.30 GHz, 12-core, 105W, 16.5MB cache • 192GB DDR4 RDIMM (6x 32GB 2666 MHz) 	<ul style="list-style-type: none"> • Cisco Virtual Interface Card 1340 modular LOM • 40 Gbps of I/O per Blade • 60 Day CWOM Trial License (Turbonomics)
B200M5 ADVANCED THREE UCS-SP-B200M5-CA3	<ul style="list-style-type: none"> • 2x Intel® Xeon® Processor 5120 • 2.20 GHz, 14-core, 105W, 19.25MB cache • 96GB DDR4 RDIMM (6x 16GB 2666 MHz) 	<ul style="list-style-type: none"> • Cisco Virtual Interface Card 1340 modular LOM • 40 Gbps of I/O per Blade • 60 Day CWOM Trial License (Turbonomics)

Sie können den Arbeitsspeicher während der Konfiguration erweitern. Die Übersicht finden Sie [hier](#).

**RAID Controller Karten sind nicht automatisch enthalten. Falls Sie Festplatten hinzufügen, denken Sie daran die RAID Option inkl. der Laufwerksschächte mitzubestellen.

B200M5 (Two-Socket EP)

BLADE SKU	BLADE KONFIGURATION	
B200M5 ADVANCED FOUR UCS-SP-B200M5-CA4	<ul style="list-style-type: none"> 2x Intel® Xeon® Processor 6140 2.30 GHz, 18-core, 140W, 24.75MB cache 192GB DDR4 RDIMM (6x 32GB 2666 MHz) 	<ul style="list-style-type: none"> Cisco Virtual Interface Card 1340 modular LOM 40 Gbps of I/O per Blade 60 Day CWOM Trial License (Turbonomics)
B200M5 HIGH FREQUENCY ONE UCS-SP-B200M5-CF1	<ul style="list-style-type: none"> 2x Intel® Xeon® Processor 5122 3.60 GHz, 4-core, 105W, 16.5MB cache 192GB DDR4 RDIMM (6x 32GB 2666 MHz) 	<ul style="list-style-type: none"> Cisco Virtual Interface Card 1340 modular LOM 40 Gbps of I/O per Blade 60 Day CWOM Trial License (Turbonomics)
B200M5 HIGH FREQUENCY TWO UCS-SP-B200M5-CF2	<ul style="list-style-type: none"> 2x Intel® Xeon® Processor 6128 3.40 GHz, 6-core, 115W, 19.25MB cache 192GB DDR4 RDIMM (6x 32GB 2666 MHz) 	<ul style="list-style-type: none"> Cisco Virtual Interface Card 1340 modular LOM 40 Gbps of I/O per Blade 60 Day CWOM Trial License (Turbonomics)
B200M5 HIGH FREQUENCY THREE UCS-SP-B200M5-CF3	<ul style="list-style-type: none"> 2x Intel® Xeon® Processor 6134 3.20 GHz, 8-core, 130W, 24.75MB cache 192GB DDR4 RDIMM (6x 32GB 2666 MHz) 	<ul style="list-style-type: none"> Cisco Virtual Interface Card 1340 modular LOM 40 Gbps of I/O per Blade 60 Day CWOM Trial License (Turbonomics)
B200M5 HIGH CORE ONE UCS-SP-B200M5-CC1	<ul style="list-style-type: none"> 2x Intel® Xeon® Processor 6130 2.10 GHz, 16-core, 125W, 22MB cache 192GB DDR4 RDIMM (6x 32GB 2666 MHz) 	<ul style="list-style-type: none"> Cisco Virtual Interface Card 1340 modular LOM 40 Gbps of I/O per Blade 60 Day CWOM Trial License (Turbonomics)
B200M5 HIGH CORE TWO UCS-SP-B200M5-CC2	<ul style="list-style-type: none"> 2x Intel® Xeon® Processor 6148 2.40 GHz, 20-core, 150W, 27.5MB cache 192GB DDR4 RDIMM (6x 32GB 2666 MHz) 	<ul style="list-style-type: none"> Cisco Virtual Interface Card 1340 modular LOM 40 Gbps of I/O per Blade 60 Day CWOM Trial License (Turbonomics)

Sie können den Arbeitsspeicher während der Konfiguration erweitern. Die Übersicht finden Sie [hier](#).

**RAID Controller Karten sind nicht automatisch enthalten. Falls Sie Festplatten hinzufügen, denken Sie daran die RAID Option inkl. der Laufwerksschächte mitzubestellen.

Server Übersicht / B-Serie B200-M5

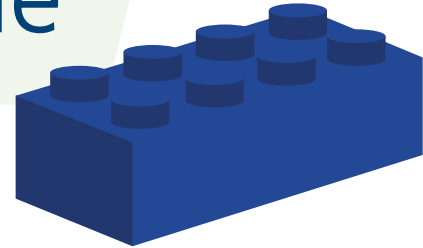
B-Series PIDs	Dual Xeon CPU	CPU Clock Rate	CPU Cores	CPU Power Rating	CPU Cache	Pre-Installed RAM (& upgrade DIMM size)	Open DIMM Slots	Upgrade capacity available	Total RAM after max upgrade
UCS-SP-B200M5-CB1	3106	1.70 GHz	8	85W	11MB	64GB 4x(16GB)	20	320GB	384GB
UCS-SP-B200M5-CS1	4108	1.80 GHz	8	85W	11MB	192GB 12x(16GB)	12	192GB	384GB
UCS-SP-B200M5-CS2	4114	2.20 GHz	10	85W	13.75MB	192GB 12x(16GB)	12	192GB	384GB
UCS-SP-B200M5-CA1	5118	2.30 GHz	12	105W	16.5MB	192GB 12x(16GB)	12	192GB	384GB
UCS-SP-B200M5-CA2	5118	2.30 GHz	12	105W	16.5MB	384GB 12x(32GB)	12	384GB	768GB
UCS-SP-B200M5-CA3	5120	2.20 GHz	14	105W	19.25MB	192GB 12x(16GB)	12	192GB	384GB
UCS-SP-B200M5-CA4	6140	2.30 GHz	18	140W	24.75MB	384GB 12x(32GB)	12	384GB	768GB
UCS-SP-B200M5-CF1	5122	3.60 GHz	4	105W	16.5MB	384GB 12x(32GB)	12	384GB	768GB
UCS-SP-B200M5-CF2	6128	3.40 GHz	6	115W	19.25MB	384GB 12x(32GB)	12	384GB	768GB
UCS-SP-B200M5-CF3	6134	3.20 GHz	8	130W	24.75MB	384GB 12x(32GB)	12	384GB	768GB
UCS-SP-B200M5-CC1	6130	2.10 GHz	16	125W	22MB	384GB 12x(32GB)	12	384GB	768GB
UCS-SP-B200M5-CC2	6148	2.40 GHz	20	150W	27.5MB	384GB 12x(32GB)	12	384GB	768GB

Sie können den Arbeitsspeicher während der Konfiguration erweitern. Die Übersicht finden Sie [hier](#).

**RAID Controller Karten sind nicht automatisch enthalten. Falls Sie Festplatten hinzufügen, denken Sie daran die RAID Option inkl. der Laufwerksschächte mitzubestellen.

SmartPlay Select (M5)

Modul Rack Server C-Serie



C220 M5 SFF PROMOS

Sie möchten gerne Preise erfahren?

Schreiben Sie einfach eine E-Mail an Marcel.Weber@Comstor.com und Sie erhalten dieses Dokument komplett mit Preisinformationen

C-SERIES SKUS	RACK MOUNT KONFIGURATION	
C220 M5 BASIC UCS-SP-C220M5-CB1	<ul style="list-style-type: none"> • 2x Intel® Xeon® Processor 3106 • 1.70 GHz, 8-core, 85W, 11MB cache • 64GB DDR4 RDIMM (4x 16GB 2666 MHz) • Cisco Virtual Interface Card 1387 MLOM 	<ul style="list-style-type: none"> • Cisco 12G Modular RAID Controller 2G Write Cache • 2x 770W PSU • Emulex Fibre Channel Selectable option • 60 Day CWOM Trial License (Turbonomics)
C220 M5 STANDARD ONE UCS-SP-C220M5-CS1	<ul style="list-style-type: none"> • 2x Intel® Xeon® Processor 4110 • 2.10 GHz, 8-core, 85W, Cache 11MB • 64GB DDR4 RDIMM (4x 16GB 2666 MHz) • Cisco Virtual Interface Card 1387 MLOM 	<ul style="list-style-type: none"> • Cisco 12G Modular RAID Controller 2G Write Cache • 2x 770W PSU • Emulex Fibre Channel Selectable option • 60 Day CWOM Trial License (Turbonomics)
C220 M5 STANDARD TWO UCS-SP-C220M5-CS2	<ul style="list-style-type: none"> • 2x Intel® Xeon® Processor 4114 • 2.20 GHz, 10-core, 85W, 13.75MB cache • 64GB DDR4 RDIMM (4x 16GB 2666 MHz) • Cisco Virtual Interface Card 1387 MLOM 	<ul style="list-style-type: none"> • Cisco 12G Modular RAID Controller 2G Write Cache • 2x 770W PSU • Emulex Fibre Channel Selectable option • 60 Day CWOM Trial License (Turbonomics)
C220 M5 ADVANCED ONE UCS-SP-C220M5-CA1	<ul style="list-style-type: none"> • 2x Intel® Xeon® Processor 5120 • 2.20 GHz, 14-core, 105W, 19.25MB cache • 96GB DDR4 RDIMM (6x 16GB 2666 MHz) • Cisco Virtual Interface Card 1387 MLOM 	<ul style="list-style-type: none"> • Cisco 12G Modular RAID Controller 2G Write Cache • 2x 770W PSU • Emulex Fibre Channel Selectable option • 60 Day CWOM Trial License (Turbonomics)
C220 M5 ADVANCED TWO UCS-SP-C220M5-CA2	<ul style="list-style-type: none"> • 2x Intel® Xeon® Processor 6132 • 2.60 GHz, 14-core, 140W, 19.25MB cache • 192GB DDR4 RDIMM (6x 32GB 2666 MHz) • Cisco Virtual Interface Card 1387 MLOM 	<ul style="list-style-type: none"> • Cisco 12G Modular RAID Controller 2G Write Cache • 2x 770W PSU • Emulex Fibre Channel Selectable option • 60 Day CWOM Trial License (Turbonomics)

Sie können den Arbeitsspeicher während der Konfiguration erweitern. Die Übersicht finden Sie [hier](#).

C240 M5 SFF PROMOS

Sie möchten gerne Preise erfahren?

Schreiben Sie einfach eine E-Mail an Marcel.Weber@Comstor.com und Sie erhalten dieses Dokument komplett mit Preisinformationen

C-SERIES SKUS	RACK MOUNT KONFIGURATION	
C240 M5 STANDARD ONE UCS-SP-C240M5-CS1	<ul style="list-style-type: none"> • 2x Intel® Xeon® Processor 4110 • 2.10 GHz, 8-core, 85W, Cache 11MB • 96GB DDR4 RDIMM (6x 16GB 2666 MHz) • Cisco Virtual Interface Card 1387 MLOM 	<ul style="list-style-type: none"> • Cisco 12G Modular RAID Controller 4G Write Cache • 2x 1600W PSU • Emulex Fibre Channel Selectable option • 60 Day CWOM Trial License (Turbonomics)
C240 M5 STANDARD TWO UCS-SP-C240M5-CS2	<ul style="list-style-type: none"> • 2x Intel® Xeon® Processor 4114 • 2.20 GHz, 10-core, 85W, 13.75MB cache • 96GB DDR4 RDIMM (6x 16GB 2666 MHz) • Cisco Virtual Interface Card 1387 MLOM 	<ul style="list-style-type: none"> • Cisco 12G Modular RAID Controller 4G Write Cache • 2x 1600W PSU • Emulex Fibre Channel Selectable option • 60 Day CWOM Trial License (Turbonomics)
C240 M5 ADVANCED ONE UCS-SP-C240M5-CA1	<ul style="list-style-type: none"> • 2x Intel® Xeon® Processor 5120 • 2.20 GHz, 14-core, 105W, 19.25MB cache • 192GB DDR4 RDIMM (6x 32GB 2666 MHz) • Cisco Virtual Interface Card 1387 MLOM 	<ul style="list-style-type: none"> • Cisco 12G Modular RAID Controller 4G Write Cache • 2x 1600W PSU • Emulex Fibre Channel Selectable option • 60 Day CWOM Trial License (Turbonomics)
C240 M5 ADVANCED TWO UCS-SP-C240M5-CA2	<ul style="list-style-type: none"> • 2x Intel® Xeon® Processor 6132 • 2.60 GHz, 14-core, 140W, 19.25MB cache • 192GB DDR4 RDIMM (6x 32GB 2666 MHz) • Cisco Virtual Interface Card 1387 MLOM 	<ul style="list-style-type: none"> • Cisco 12G Modular RAID Controller 4G Write Cache • 2x 1600W PSU • Emulex Fibre Channel Selectable option • 60 Day CWOM Trial License (Turbonomics)
C240 M5 HIGH FREQUENCY ONE UCS-SP-C240M5-CF1	<ul style="list-style-type: none"> • 2x Intel® Xeon® Processor 5122 • 3.60 GHz, 4-core, 105W, 16.5MB cache • 192GB DDR4 RDIMM (6x 32GB 2666 MHz) • Cisco Virtual Interface Card 1387 MLOM 	<ul style="list-style-type: none"> • Cisco 12G Modular RAID Controller 4G Write Cache • 2x 1600W PSU • Emulex Fibre Channel Selectable option • 60 Day CWOM Trial License (Turbonomics)
C240 M5 HIGH FREQUENCY TWO UCS-SP-C240M5-CF2	<ul style="list-style-type: none"> • 2x Intel® Xeon® Processor 6128 • 3.40 GHz, 6-core, 115W, 19.25MB cache • 192GB DDR4 RDIMM (6x 32GB 2666 MHz) • Cisco Virtual Interface Card 1387 MLOM 	<ul style="list-style-type: none"> • Cisco 12G Modular RAID Controller 4G Write Cache • 2x 1600W PSU • Emulex Fibre Channel Selectable option • 60 Day CWOM Trial License (Turbonomics)

Sie können den Arbeitsspeicher während der Konfiguration erweitern. Die Übersicht finden Sie [hier](#).

C240 M5 LFF PROMOS

C-SERIES SKUS	RACK MOUNT KONFIGURATION	
C240 M5L STANDARD ONE UCS-SPC240M5L-CS1	<ul style="list-style-type: none"> • 2x Intel® Xeon® Processor 4110 • 2.10 GHz, 8-core, 85W, 11MB cache • 96GB DDR4 RDIMM (6x 16GB 2666 MHz) • Cisco Virtual Interface Card 1387 MLOM 	<ul style="list-style-type: none"> • Cisco 12G Modular RAID Controller 2G Write Cache • 2x 1600W PSU • Emulex Fibre Channel Selectable option • 60 Day CWOM Trial License (Turbonomics)
C240 M5L STANDARD TWO UCS-SPC240M5L-CS2	<ul style="list-style-type: none"> • 2x Intel® Xeon® Processor 4114 • 2.20 GHz, 10-core, 85W, 13.75MB cache • 96GB DDR4 RDIMM (6x 16GB 2666 MHz) • Cisco Virtual Interface Card 1387 MLOM 	<ul style="list-style-type: none"> • Cisco 12G Modular RAID Controller 2G Write Cache • 2x 1600W PSU • Emulex Fibre Channel Selectable option • 60 Day CWOM Trial License (Turbonomics)
C240 M5L HIGH FREQUENCY ONE UCS-SPC240M5L-CF1	<ul style="list-style-type: none"> • 2x Intel® Xeon® Processor 5122 • 3.60 GHz, 4-core, 105W, Cache 16.5MB • 192GB DDR4 RDIMM (6x 32GB 2666 MHz) • Cisco Virtual Interface Card 1387 MLOM 	<ul style="list-style-type: none"> • Cisco 12G Modular RAID Controller 2G Write Cache • 2x 1600W PSU • Emulex Fibre Channel Selectable option • 60 Day CWOM Trial License (Turbonomics)
C240 M5L HIGH FREQUENCY TWO UCS-SPC240M5L-CF2	<ul style="list-style-type: none"> • 2x Intel® Xeon® Processor 6128 • 3.40 GHz, 6-core, 115W, 19.25MB cache • 192GB DDR4 RDIMM (6x 32GB 2666 MHz) • Cisco Virtual Interface Card 1387 MLOM 	<ul style="list-style-type: none"> • Cisco 12G Modular RAID Controller 2G Write Cache • 2x 1600W PSU • Emulex Fibre Channel Selectable option • 60 Day CWOM Trial License (Turbonomics)

Server Übersicht / C-Serie

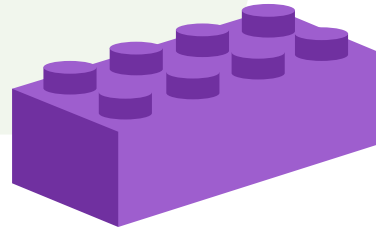
C-Series PIDs	Dual Xeon CPU	CPU Clock Rate	CPU Cores	CPU Power Rating	CPU Cache	Pre-Installed RAM (& upgrade DIMM size)	Open DIMM Slots	Upgrade capacity available	Total RAM <u>after</u> max upgrade
UCS-SP-C220M5-CB1	3106	1.70 GHz	8	85W	11MB	64GB 4x(16GB)	20	320GB	384GB
UCS-SP-C220M5-CS1	4110	2.10 GHz	8	85W	11MB	64GB 4x(16GB)	20	320GB	384GB
UCS-SP-C220M5-CS2	4114	2.20 GHz	10	85W	13.75MB	64GB 4x(16GB)	20	320GB	384GB
UCS-SP-C220M5-CA1	5120	2.20 GHz	14	105W	19.25MB	192GB 12x(16GB)	12	192GB	384GB
UCS-SP-C220M5-CA2	6132	2.60 GHz	14	140W	19.25MB	384GB 12x(32GB)	12	384GB	768GB
UCS-SP-C240M5-CS1	4110	2.10 GHz	8	85W	11MB	192GB 12x(16GB)	12	192GB	384GB
UCS-SP-C240M5-CS2	4114	2.20 GHz	10	85W	13.75MB	192GB 12x(16GB)	12	192GB	384GB
UCS-SP-C240M5-CA1	5120	2.20 GHz	14	105W	19.25MB	384GB 12x(32GB)	12	384GB	768GB
UCS-SP-C240M5-CA2	6132	2.60 GHz	14	140W	19.25MB	384GB 12x(32GB)	12	384GB	768GB
UCS-SP-C240M5-CF1	5122	3.60 GHz	4	105W	16.5MB	384GB 12x(32GB)	12	384GB	768GB
UCS-SP-C240M5-CF2	6128	3.40 GHz	6	115W	19.25MB	384GB 12x(32GB)	12	384GB	768GB
UCS-SPC240M5L-CS1	4110	2.10 GHz	8	85W	11MB	256GB 16x(16GB)	8	128GB	384GB
UCS-SPC240M5L-CS2	4114	2.20 GHz	10	85W	13.75MB	192GB 12x(16GB)	12	192GB	384GB
UCS-SPC240M5L-CF1	5122	3.60 GHz	4	105W	16.5MB	384GB 12x(32GB)	12	384GB	768GB
UCS-SPC240M5L-CF2	6128	3.40 GHz	6	115W	19.25MB	384GB 12x(32GB)	12	384GB	768GB

Sie können den Arbeitsspeicher während der Konfiguration erweitern. Die Übersicht finden Sie [hier](#).

**RAID Controller Karten sind nicht automatisch enthalten. Falls Sie Festplatten hinzufügen, denken Sie daran die RAID Option inkl. der Laufwerksschächte mitzubestellen.

SmartPlay Select (M5)

Modul Storage and Memory

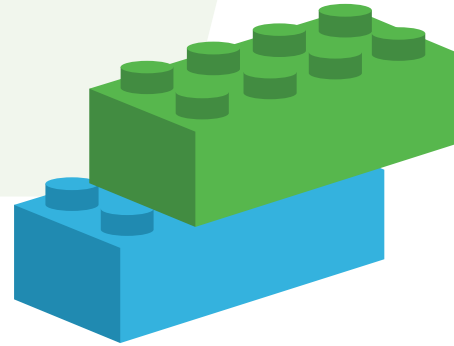


Storage & Memory

STORAGE SKUS	KONFIGURATION
SSD Storage	
UCS-SP-SD-1P6T-2	<ul style="list-style-type: none"> 1.6TB 2.5in Enterprise performance 12G SAS SSD- 10X Endurance (2-Pack)
HDD Storage	
UCS-SP-HD-1P2T-2	<ul style="list-style-type: none"> 1.2TB 12G Sas 10K RPM SFF HDD (2 Pack)
UCS-SP-HD-1P8T-2	<ul style="list-style-type: none"> 1.8TB 12G SAS 10K RPM SFF HDD (2 Pack)
UCS-SP-HD-600G-2	<ul style="list-style-type: none"> 600GB 12G SAS 10K RPM SFF HDD (2 Pack)

MEMORY SKUS	KONFIGURATION
UCS-SP-M16G1-RSH	<ul style="list-style-type: none"> 16GB DDR4 2666 MHz RDIMM/PC4 (Upgrade within Server) (Not sold stand alone)
UCS-SP-M16G2-RSH	<ul style="list-style-type: none"> 16GB DDR4 2666 MHz RDIMM/PC4 (Upgrade within Server) (Not sold stand alone) ** Rack Only**
UCS-SP-M32G2-RSH	<ul style="list-style-type: none"> 32GB DDR4 2666 MHz RDIMM/PC4 (Upgrade within Server) (Not sold stand alone)

SmartPlay Select (M5)
**Modul Chassis and
Fabric Interconnect**



Schreiben Sie einfach eine E-Mail an Marcel.Weber@Comstor.com und Sie erhalten dieses Dokument komplett mit Preisinformationen

CHASSIS SKUS	CHASSIS KONFIGURATION
CLASSIC AC CHASSIS UCS-SP-5108-AC	<ul style="list-style-type: none"> • Single chassis with dual, 8-port fabric extenders • 2208XP (8 external, 32 internal, 10 Gb ports) • 4x twinax 3 meter cable • 4x 2500W AC power supply
DC CHASSIS UCS-SP-5108-DC	<ul style="list-style-type: none"> • Single chassis with dual, 8-port fabric extenders • 2208XP (8 external, 32 internal, 10 Gb ports) • 4x twinax 3 meter cable • 4x 2500W DC -48V power supply
CLASSIC AC CHASSIS 40GB Enabled IOM UCS-SP-5108-AC3	<ul style="list-style-type: none"> • Single chassis with dual, 4-port fabric extenders • 2x 2304 IOM (4 external, 8 internal, 40 Gb ports) • 4x 40G Base SFP+ 3 Meter Cable • 4x 2500W AC power supply
CLASSIC DC CHASSIS 40GB Enabled IOM UCS-SP-5108-DC3	<ul style="list-style-type: none"> • Single chassis with dual, 4-port fabric extenders • 2x 2304 IOM (4 external, 8 internal, 40 Gb ports) • 4x 40G Base SFP+ 3 Meter Cable • 4x 2500W DC -48V power supply

MINI CHASSIS	CHASSIS + 6324 FABRIC INTERCONNECT KONFIGURATION
MINI CHASSIS UCS-SP-MINI	<ul style="list-style-type: none"> • Pair of 6324 Fabric Interconnect In-chassis FI w/ 4 UP 1x40G, Exp 16-10G Ports • 4x 2500W AC power supply • Increased server compatibility including B200M4/5, C220M4/5, C240M4/5 • Does not include UCS Central
MINI CHASSIS UCS-SP-MINI-2-5108	<ul style="list-style-type: none"> • Mini Chassis with IOM, 2x 10Gb Ports (4 external 16 internal) • 2x 6324 Fabric Interconnect License for 40G Scalability Port • 2x QSFP to 4xSFP10G Passive Copper Splitter Cable 3M • 4x 2500W AC power supply • Does not include UCS Central, No FI hardware included

Schreiben Sie einfach eine E-Mail an Marcel.Weber@Comstor.com und Sie erhalten dieses Dokument komplett mit Preisinformationen

FABRIC SKUS	FABRIC INTERCONNECT KONFIGURATION		
40GB 32 Port FI UCS-SP-FI6332-2X	<ul style="list-style-type: none"> • Pair of 6332 FI w/ 8-40Gbps port Licenses each FI • Optics included (8x-40G QSFP SR-BD; 16x-40GBase-CR4 Passive Copper +3 Meter Cable) 		
40GB 24 Port FI UCS-SP-FI633216-2X	<ul style="list-style-type: none"> • Pair of 6332-16UP FI w/ 12 port Licenses --4x 40Gbps Licenses & 8X Unified Port Licenses each FI • Optics included (8x-16Gbps Fibre Channel SW SFP+LC; 8x-40G QSFP SR-BD; 8x-40GBase-CR4 Passive Copper +3 Meter Cable) 		
FI Licenses UCS-SP-FI6332-L-4X	<ul style="list-style-type: none"> • 6300 Series FI port License- 4 Pack 		
48 Port FI UCS-SP-FI48-2X	<ul style="list-style-type: none"> • Pair of 6248 FI w/ 24 port Licenses total • Optics included (8x-8Gbps Fibre Channel SW SFP+LC; 8x-10GBase-SR SFP Module; 8x-10GBase-CU SFP + 3 Meter Cable) 		
96 Port FI UCS-SP-FI96-2X	<ul style="list-style-type: none"> • Pair of 6296 FI w/ 36 port Licenses total • Optics included (8x-8Gbps Fibre Channel SW SFP+LC; 8x-10GBase-SR SFP Module; 8x-10GBase-CU SFP + 3 Meter Cable) 		
FI Licenses UCS-SP-FI-L-4X	<ul style="list-style-type: none"> • 6200 Series FI port License- 4 Pack 		

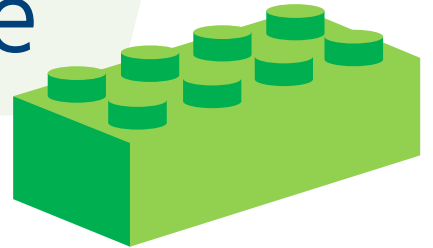
SmartPlay Select
M4 CPU Angebote

Haswell vs Broadwell

V4 Xeon CPU	CPU Clock Rate	CPU Cores	CPU Power Rating	CPU Cache	V3 Xeon CPU	CPU Clock Rate	CPU Cores	CPU Power Rating	CPU Cache
E5-2609E	1.70 GHz	8	85W	20MB	E5-2609D	1.90 GHz	6	85W	15MB
E5-2620E	2.10 GHz	8	85W	20MB	E5-2620D	2.40 GHz	6	85W	15MB
E5-2630E	2.20 GHz	10	85W	20MB	E5-2630D	2.40 GHz	8	85W	20MB
E5-2637E	3.50 GHz	4	135W	15MB	E5-2637D	3.50 GHz	4	135W	15MB
E5-2643E	3.40 GHz	6	135W	20MB	E5-2643D	3.40 GHz	6	135W	20MB
E5-2650E	2.20 GHz	12	105W	30MB	E5-2650D	NA	NA	NA	NA
E5-2660E	2.00 GHz	14	105W	35MB	E5-2660D	2.60 GHz	10	105W	25MB
E5-2667E	3.20 GHz	8	135W	25MB	E5-2667D	3.20 GHz	8	135W	20MB
E5-2670E	NA	NA	NA	NA	E5-2670D	2.30 GHz	12	120W	30MB
E5-2680E	2.40 GHz	14	120W	35MB	E5-2680D	2.50 GHz	12	120W	30MB
E5-2683E	2.10 GHz	16	120W	40MB	E5-2683D	NA	NA	NA	NA
E5-2690E	2.60 GHz	14	135W	35MB	E5-2690D	2.60 GHz	12	135W	30MB
E5-2697E	2.30 GHz	18	145W	45MB	E5-2697D	2.60 GHz	14	145W	35MB

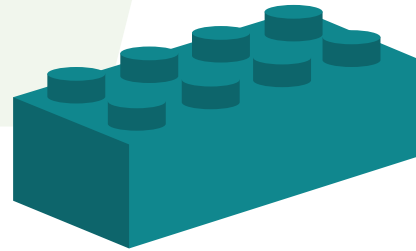
SmartPlay Select (M4)

Modul Storage Server S-Serie



C-SERIES SKUS	RACK MOUNT CONFIGURATION		Raw Capacity
S3260 Basic UCSS-SP-S3260-BB	<ul style="list-style-type: none"> 2x Intel® Xeon® Processor E5-2650 v4 2.20 GHz, 12-core, 105W, 30MB cache 128GB DDR4 RDIMM (8x 16GB 2400 MHz) Cisco Virtual Interface Card 1300 IO Controller 	<ul style="list-style-type: none"> Cisco C3000 RAID Controller 4G RAID Cache 4x 1050W PSU 2x 480GB Boot SSD (Gen 2) 14x 6TB 12Gbps 7200 RPM HDD 	84TB
S3260 Basic Plus UCSS-SP-S3260-BB1	<ul style="list-style-type: none"> 2x Intel® Xeon® Processor E5-2650 v4 2.20 GHz, 12-core, 105W, 30MB cache 128GB DDR4 RDIMM (8x 16GB 2400 MHz) Cisco Virtual Interface Card 1300 IO Controller 	<ul style="list-style-type: none"> Cisco C3000 RAID Controller 4G RAID Cache 2x 480GB Boot SSD (Gen 2) 14x 6TB 12Gbps 7200 RPM HDD 18x 400G SSD Top Load, 4x 1050W PSU 	108TB
S3260 Entry UCSS-SP-S3260-BE	<ul style="list-style-type: none"> 2x Intel® Xeon® Processor E5-2680 v4 2.40 GHz, 14-core, 120W, 35MB cache 256GB DDR4 RDIMM (8x 32GB 2400 MHz) Cisco Virtual Interface Card 1300 IO Controller 	<ul style="list-style-type: none"> Cisco C3000 RAID Controller 4G RAID Cache 4x 1050W PSU 4x 480GB Boot SSD (Gen 2) 48x 4TB 12Gbps 7200 RPM HDD 	192TB
S3260 Entry Plus UCSS-SP-S3260-BE1	<ul style="list-style-type: none"> 2x Intel® Xeon® Processor E5-2650 v4 2.20 GHz, 12-core, 105W, 30MB cache 128GB DDR4 RDIMM (8x 16GB 2400 MHz) Cisco Virtual Interface Card 1300 IO Controller 	<ul style="list-style-type: none"> Cisco C3000 RAID Controller 4G RAID Cache 4x 1050W PSU 2x 480GB Boot SSD (Gen 2) 48x 6TB 12Gbps 7200 RPM HDD 	288TB
S3260 Value UCSS-SP-S3260-BV	<ul style="list-style-type: none"> 2x Intel® Xeon® Processor E5-2680 v4 2.40 GHz, 14-core, 120W, 35MB cache 256GB DDR4 RDIMM (8x 32GB 2400 MHz) Cisco Virtual Interface Card 1300 IO Controller 	<ul style="list-style-type: none"> Cisco C3000 RAID Controller 4G RAID Cache 4x 1050W PSU 4x 480GB Boot SSD (Gen 2) 48x 8TB NL-SAS 7200K Helium HDD 	384TB
S3260 Performance UCSS-SP-S3260-BP	<ul style="list-style-type: none"> 2x Intel® Xeon® Processor E5-2650 v4 2.20 GHz, 12-core, 105W, 30MB cache 128GB DDR4 RDIMM (8x 32GB 2400 MHz) Cisco Virtual Interface Card 1300 IO Controller 	<ul style="list-style-type: none"> Cisco C3000 RAID Controller 4G RAID Cache 4x 1050W PSU 2x 480GB Boot SSD (Gen 2) 42x 10TB 4Kn Top Load 	480TB
S3260 Performance Plus UCSS-SP-S3260-BP1	<ul style="list-style-type: none"> 2x Intel® Xeon® Processor E5-2695 v4 2.10 GHz, 18-core, 120W, 45MB cache 128GB DDR4 RDIMM (8x 32GB 2400 MHz) Cisco Virtual Interface Card 1300 IO Controller 	<ul style="list-style-type: none"> Cisco C3000 RAID Controller 4G RAID Cache 4x 1050W PSU 2x 480GB Boot SSD (Gen 2) 56x 10TB 4Kn Top Load 	560TB

SmartPlay Select (M4)
Modul Blades B-Serie



B200M4 (Two-Socket EP)

BLADE SKU	BLADE KONFIGURATION	
B200M4 BASIC UCS-SP-B200M4-BB1	<ul style="list-style-type: none"> • 2x Intel® Xeon® Processor E5-2609 v4 • 1.70 GHz, 8-core, 85W, 20MB cache • 64GB DDR4 RDIMM (4x 16GB 2400 MHz) 	<ul style="list-style-type: none"> • Cisco Virtual Interface Card 1340 modular LOM • 40 Gbps of I/O per Blade • Controller Option*
B200M4 STANDARD ONE UCS-SP-B200M4-BS1	<ul style="list-style-type: none"> • 2x Intel® Xeon® Processor E5-2630 v4 • 2.20 GHz, 10-core, 85W, 20MB cache • 128GB DDR4 RDIMM (8x 16GB 2400 MHz) 	<ul style="list-style-type: none"> • Cisco Virtual Interface Card 1340 modular LOM • 40 Gbps of I/O per Blade • Controller Option*
B200M4 STANDARD TWO UCS-SP-B200M4-BS2	<ul style="list-style-type: none"> • 2x Intel® Xeon® Processor E5-2620 v4 • 2.10 GHz, 8-core, 85W, 20MB cache • 128GB DDR4 RDIMM (8x 16GB 2400 MHz) 	<ul style="list-style-type: none"> • Cisco Virtual Interface Card 1340 modular LOM • 40 Gbps of I/O per Blade • Controller Option*
B200M4 ADVANCED ONE UCS-SP-B200M4-BA1	<ul style="list-style-type: none"> • 2x Intel® Xeon® Processor E5-2690 v4 • 2.60 GHz, 14-core, 135W, 35MB cache • 256GB DDR4 RDIMM (8x 32GB 2400 MHz) 	<ul style="list-style-type: none"> • Cisco Virtual Interface Card 1340 modular LOM • 40 Gbps of I/O per Blade • Controller Option*
B200M4 ADVANCED TWO UCS-SP-B200M4-BA2	<ul style="list-style-type: none"> • 2x Intel® Xeon® Processor E5-2680 v4 • 2.40 GHz, 14-core, 120W, 35MB cache • 256GB DDR4 RDIMM (8x 32GB 2400 MHz) 	<ul style="list-style-type: none"> • Cisco Virtual Interface Card 1340 modular LOM • 40 Gbps of I/O per Blade • Controller Option*
B200M4 ADVANCED THREE UCS-SP-B200M4-BA3	<ul style="list-style-type: none"> • 2x Intel® Xeon® Processor E5-2650 v4 • 2.20 GHz, 12-core, 105W, 30MB cache • 256GB DDR4 RDIMM (8x 32GB 2400 MHz) 	<ul style="list-style-type: none"> • Cisco Virtual Interface Card 1340 modular LOM • 40 Gbps of I/O per Blade • Controller Option*

Sie können den Arbeitsspeicher während der Konfiguration erweitern. Die Übersicht finden Sie [hier](#).

**RAID Controller Karten sind nicht automatisch enthalten. Falls Sie Festplatten hinzufügen, denken Sie daran die RAID Option inkl. der Laufwerksschächte mitzubestellen.

Schreiben Sie einfach eine E-Mail an Marcel.Weber@Comstor.com und Sie erhalten dieses Dokument komplett mit Preisinformationen

B200M4 (Two-Socket EP)

BLADE SKU	BLADE KONFIGURATION	
B200M4 ADVANCED FOUR UCS-SP-B200M4-BA4	<ul style="list-style-type: none"> • 2x Intel® Xeon® Processor E5-2660 v4 • 2.00 GHz, 14-core, 105W, 35MB cache • 256GB DDR4 RDIMM (16x 16GB 2400 MHz) 	<ul style="list-style-type: none"> • Cisco Virtual Interface Card 1340 modular LOM • 40 Gbps of I/O per Blade • Controller Option*
B200M4 ADVANCED FIVE (NEW) UCS-SP-B200M4-BA5	<ul style="list-style-type: none"> • 2x Intel® Xeon® Processor E5-2650 v4 • 2.20 GHz, 12-core, 105W, 30MB cache • 128GB DDR4 RDIMM (8x 16GB 2400 MHz) 	<ul style="list-style-type: none"> • Cisco Virtual Interface Card 1340 modular LOM • 40 Gbps of I/O per Blade • Controller Option*
B200M4 HIGH FREQUENCY ONE UCS-SP-B200M4-BF1	<ul style="list-style-type: none"> • 2x Intel® Xeon® Processor E5-2643 v4 • 3.40 GHz, 6-core, 135W, 20MB cache • 256GB DDR4 RDIMM (8x 32GB 2400 MHz) 	<ul style="list-style-type: none"> • Cisco Virtual Interface Card 1340 modular LOM • 40 Gbps of I/O per Blade • Controller Option*
B200M4 HIGH FREQUENCY TWO UCS-SP-B200M4-BF2	<ul style="list-style-type: none"> • 2x Intel® Xeon® Processor E5-2637 v4 • 3.50 GHz, 4-core, 135W, 15MB cache • 256GB DDR4 RDIMM (8x 32GB 2400 MHz) 	<ul style="list-style-type: none"> • Cisco Virtual Interface Card 1340 modular LOM • 40 Gbps of I/O per Blade • Controller Option*
B200M4 HIGH FREQUENCY THREE UCS-SP-B200M4-BF3	<ul style="list-style-type: none"> • 2x Intel® Xeon® Processor E5-2667 v4 • 3.20 GHz, 8-core, 135W, 25MB cache • 256GB DDR4 RDIMM (8x 32GB 2400 MHz) 	<ul style="list-style-type: none"> • Cisco Virtual Interface Card 1340 modular LOM • 40 Gbps of I/O per Blade • Controller Option*
B200M4 HIGH CORE ONE UCS-SP-B200M4-BC1	<ul style="list-style-type: none"> • 2x Intel® Xeon® Processor E5-2683 v4 • 2.10 GHz, 16-core, 120W, 40MB cache • 256GB DDR4 RDIMM (8x 32GB 2400 MHz) 	<ul style="list-style-type: none"> • Cisco Virtual Interface Card 1340 modular LOM • 40 Gbps of I/O per Blade • Controller Option*
B200M4 HIGH CORE TWO UCS-SP-B200M4-BC2	<ul style="list-style-type: none"> • 2x Intel® Xeon® Processor E5-2697 v4 • 2.30 GHz, 18-core, 145W, 45MB cache • 256GB DDR4 RDIMM (8x 32GB 2400 MHz) 	<ul style="list-style-type: none"> • Cisco Virtual Interface Card 1340 modular LOM • 40 Gbps of I/O per Blade • Controller Option*

Sie können den Arbeitsspeicher während der Konfiguration erweitern. Die Übersicht finden Sie [hier](#).

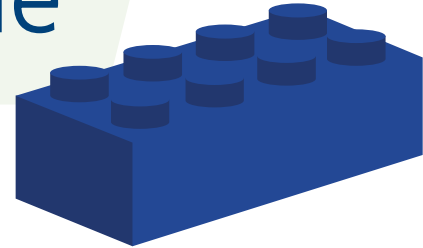
**RAID Controller Karten sind nicht automatisch enthalten. Falls Sie Festplatten hinzufügen, denken Sie daran die RAID Option inkl. der Laufwerksschächte mitzubestellen.

Übersicht

B-Series PIDs	Dual Xeon CPU	CPU Clock Rate	CPU Cores	CPU Power Rating	CPU Cache	Pre-Installed RAM (& upgrade DIMM size)	Open DIMM Slots	Upgrade capacity available	Total RAM <u>after</u> max upgrade
UCS-SP-B200M4-BB1	E5-2609E v4	1.70 GHz	8	85W	20MB	64GB 4x(16GB)	20	320GB	384GB
UCS-SP-B200M4-BS1	E5-2630E v4	2.20 GHz	10	85W	20MB	128GB 8x(16GB)	16	256GB	384GB
UCS-SP-B200M4-BS2	E5-2620E v4	2.10 GHz	8	85W	20MB	128GB 8x(16GB)	16	256GB	384GB
UCS-SP-B200M4-BA1	E5-2690E v4	2.60 GHz	14	135W	35MB	256GB 8x(32GB)	16	512GB	768GB
UCS-SP-B200M4-BA2	E5-2680E v4	2.40 GHz	14	120W	35MB	256GB 8x(32GB)	16	512GB	768GB
UCS-SP-B200M4-BA3	E5-2650E v4	2.20 GHz	12	105W	30MB	256GB 8x(32GB)	16	512GB	768GB
UCS-SP-B200M4-BA4	E5-2660E v4	2.00 GHz	14	105W	35MB	256GB 16x(16GB)	8	128GB	384GB
UCS-SP-B200M4-BA5	E5-2650E v4	2.20 GHz	12	105W	30MB	128GB 8x(16GB)	16	256GB	384GB
UCS-SP-B200M4-BF1	E5-2643E v4	3.40 GHz	6	135W	20MB	256GB 8x(32GB)	16	512GB	768GB
UCS-SP-B200M4-BF2	E5-2637E v4	3.50 GHz	4	135W	15MB	256GB 8x(32GB)	16	512GB	768GB
UCS-SP-B200M4-BF3	E5-2667E v4	3.20 GHz	8	135W	25MB	256GB 8x(32GB)	16	512GB	768GB
UCS-SP-B200M4-BC1	E5-2683E v4	2.10 GHz	16	120W	40MB	256GB 8x(32GB)	16	512GB	768GB
UCS-SP-B200M4-BC2	E5-2697E v4	2.30 GHz	18	145W	45MB	256GB 8x(32GB)	16	512GB	768GB

SmartPlay Select (M4)

Modul Rack Server C-Serie



C220 M4 SFF PROMOS

C-SERIES SKUS	RACK MOUNT KONFIGURATION	
C220 M4 BASIC UCS-SP-C220M4-B-B1	<ul style="list-style-type: none"> • 2x Intel® Xeon® Processor E5-2609 v4 • 1.70 GHz, 8-core, 85W, 20MB cache • 64GB DDR4 RDIMM (4x 16GB 2400 MHz) • Cisco Virtual Interface Card 1227 MLOM 	<ul style="list-style-type: none"> • Cisco 12G SAS Modular RAID Controller 1G Write Cache • 2x 770W PSU • Emulex Fibre Channel Selectable option
C220 M4 STANDARD ONE UCS-SP-C220M4-B-S1	<ul style="list-style-type: none"> • 2x Intel® Xeon® Processor E5-2630 v4 • 2.20 GHz, 10-core, 85W, Cache 20MB • 64GB DDR4 RDIMM (4x 16GB 2400 MHz) • Cisco Virtual Interface Card 1227 MLOM 	<ul style="list-style-type: none"> • Cisco 12G SAS Modular RAID Controller 1G Write Cache • 2x 770W PSU • Emulex Fibre Channel Selectable option
C220 M4 STANDARD TWO UCS-SP-C220M4-B-S2	<ul style="list-style-type: none"> • 2x Intel® Xeon® Processor E5-2620 v4 • 2.10 GHz, 8-core, 85W, 20MB cache • 64GB DDR4 RDIMM (4x 16GB 2400 MHz) • Cisco Virtual Interface Card 1227 MLOM 	<ul style="list-style-type: none"> • Cisco 12G SAS Modular RAID Controller 1G Write Cache • 2x 770W PSU • Emulex Fibre Channel Selectable option
C220 M4 ADVANCED ONE UCS-SP-C220M4-B-A1	<ul style="list-style-type: none"> • 2x Intel® Xeon® Processor E5-2680 v4 • 2.40 GHz, 14-core, 120W, 35MB cache • 128GB DDR4 RDIMM (8x 16GB 2400 MHz) • Cisco Virtual Interface Card 1227 MLOM 	<ul style="list-style-type: none"> • Cisco 12G SAS Modular RAID Controller 1G Write Cache • 2x 770W PSU • Emulex Fibre Channel Selectable option
C220 M4 ADVANCED TWO UCS-SP-C220M4-B-A2	<ul style="list-style-type: none"> • 2x Intel® Xeon® Processor E5-2650 v4 • 2.20 GHz, 12-core, 105W, 30MB cache • 128GB DDR4 RDIMM (8x 16GB 2400 MHz) • Cisco Virtual Interface Card 1227 MLOM 	<ul style="list-style-type: none"> • Cisco 12G SAS Modular RAID Controller 1G Write Cache • 2x 770W PSU • Emulex Fibre Channel Selectable option

Sie können den Arbeitsspeicher während der Konfiguration erweitern. Die Übersicht finden Sie [hier](#).

Schreiben Sie einfach eine E-Mail an Marcel.Weber@Comstor.com und Sie erhalten dieses Dokument komplett mit Preisinformationen

C240 M4 SFF PROMOS

C-SERIES SKUS	RACK MOUNT KONFIGURATION	
C240 M4 STANDARD ONE UCS-SP-C240M4-B-S1	<ul style="list-style-type: none"> • 2x Intel® Xeon® Processor E5-2630 v4 • 2.20 GHz, 10-core, 85W, Cache 20MB • 128GB DDR4 RDIMM (8x 16GB 2400 MHz) • Cisco Virtual Interface Card 1227 MLOM 	<ul style="list-style-type: none"> • Cisco 12G SAS Modular RAID Controller 2G Write Cache • 2x 1400W PSU; SX chassis • Emulex Fibre Channel Selectable option
C240 M4 STANDARD TWO UCS-SP-C240M4-B-S2	<ul style="list-style-type: none"> • 2x Intel® Xeon® Processor E5-2620 v4 • 2.10 GHz, 8-core, 85W, 20MB cache • 128GB DDR4 RDIMM (8x 16GB 2400 MHz) • Cisco Virtual Interface Card 1227 MLOM 	<ul style="list-style-type: none"> • Cisco 12G SAS Modular RAID Controller 2G Write Cache • 2x 1400W PSU; SX chassis • Emulex Fibre Channel Selectable option
C240 M4 ADVANCED ONE UCS-SP-C240M4-B-A1	<ul style="list-style-type: none"> • 2x Intel® Xeon® Processor E5-2680 v4 • 2.40 GHz, 14-core, 120W, 35MB cache • 256GB DDR4 RDIMM (8x 32GB 2400 MHz) • Cisco Virtual Interface Card 1227 MLOM 	<ul style="list-style-type: none"> • Cisco 12G SAS Modular RAID Controller 2G Write Cache • 2x 1400W PSU; SX chassis • Emulex Fibre Channel Selectable option
C240 M4 ADVANCED TWO UCS-SP-C240M4-B-A2	<ul style="list-style-type: none"> • 2x Intel® Xeon® Processor E5-2650 v4 • 2.20 GHz, 12-core, 105W, 30MB cache • 256GB DDR4 RDIMM (8x 32GB 2400 MHz) • Cisco Virtual Interface Card 1227 MLOM 	<ul style="list-style-type: none"> • Cisco 12G SAS Modular RAID Controller 2G Write Cache • 2x 1400W PSU; SX chassis • Emulex Fibre Channel Selectable option
C240 M4 HIGH FREQUENCY ONE UCS-SP-C240M4-B-F1	<ul style="list-style-type: none"> • 2x Intel® Xeon® Processor E5-2643 v4 • 3.40 GHz, 6-core, 135W, 20MB cache • 256GB DDR4 RDIMM (8x 32GB 2400 MHz) • Cisco Virtual Interface Card 1227 MLOM 	<ul style="list-style-type: none"> • Cisco 12G SAS Modular RAID Controller 2G Write Cache • 2x 1400W PSU; SX chassis • Emulex Fibre Channel Selectable option
C240 M4 HIGH FREQUENCY TWO UCS-SP-C240M4-B-F2	<ul style="list-style-type: none"> • 2x Intel® Xeon® Processor E5-2637 v4 • 3.50 GHz, 4-core, 135W, Cache 15MB • 256GB DDR4 RDIMM (8x 32GB 2400 MHz) • Cisco Virtual Interface Card 1227 MLOM 	<ul style="list-style-type: none"> • Cisco 12G SAS Modular RAID Controller 2G Write Cache • 2x 1400W PSU; SX chassis • Emulex Fibre Channel Selectable option

Sie können den Arbeitsspeicher während der Konfiguration erweitern. Die Übersicht finden Sie [hier](#).

Schreiben Sie einfach eine E-Mail an Marcel.Weber@Comstor.com und Sie erhalten dieses Dokument komplett mit Preisinformationen

C220 M4 LFF PROMOS

C-SERIES SKUS	RACK MOUNT CONFIGURATION	
C240 M4L STANDARD ONE UCS-SPC240M4L-B-S1	<ul style="list-style-type: none"> • 2x Intel® Xeon® Processor E5-2630 v4 • 2.20 GHz, 10-core, 85W, 20MB cache • 128GB DDR4 RDIMM (8x 16GB 2400 MHz) • Cisco Virtual Interface Card 1227 MLOM 	<ul style="list-style-type: none"> • Cisco 12G SAS Modular RAID Controller 2G Write Cache • 2x 1400W PSU; SX chassis • Emulex Fibre Channel Selectable option
C240 M4L STANDARD TWO UCS-SPC240M4L-B-S2	<ul style="list-style-type: none"> • 2x Intel® Xeon® Processor E5-2620 v4 • 2.10 GHz, 8-core, 85W, 20MB cache • 128GB DDR4 RDIMM (8x 16GB 2400 MHz) • Cisco Virtual Interface Card 1227 MLOM 	<ul style="list-style-type: none"> • Cisco 12G SAS Modular RAID Controller 2G Write Cache • 2x 1400W PSU; SX chassis • Emulex Fibre Channel Selectable option
C240 M4L HIGH FREQUENCY ONE UCS-SPC240M4L-B-F1	<ul style="list-style-type: none"> • 2x Intel® Xeon® Processor E5-2643 v4 • 3.40 GHz, 6-core, 135W, Cache 20MB • 256GB DDR4 RDIMM (8x 32GB 2400 MHz) • Cisco Virtual Interface Card 1227 MLOM 	<ul style="list-style-type: none"> • Cisco 12G SAS Modular RAID Controller 2G Write Cache • 2x 1400W PSU; SX chassis • Emulex Fibre Channel Selectable option
C240 M4L HIGH FREQUENCY TWO UCS-SPC240M4L-B-F2	<ul style="list-style-type: none"> • 2x Intel® Xeon® Processor E5-2637 v4 • 3.50 GHz, 4-core, 135W, 15MB cache • 256GB DDR4 RDIMM (8x 32GB 2400 MHz) • Cisco Virtual Interface Card 1227 MLOM 	<ul style="list-style-type: none"> • Cisco 12G SAS Modular RAID Controller 2G Write Cache • 2x 1400W PSU; SX chassis • Emulex Fibre Channel Selectable option

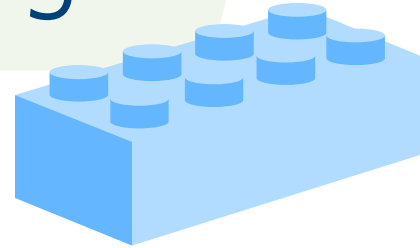
Sie können den Arbeitsspeicher während der Konfiguration erweitern. Die Übersicht finden Sie [hier](#).

Übersicht

B-Series PIDs	Dual Xeon CPU	CPU Clock Rate	CPU Cores	CPU Power Rating	CPU Cache	Pre-Installed RAM (& upgrade DIMM size)	Open DIMM Slots	Upgrade capacity available	Total RAM after max upgrade
UCS-SP-C220M4-B-B1	E5-2609E v4	1.70 GHz	8	85W	20MB	64GB 4x(16GB)	20	320GB	384GB
UCS-SP-C220M4-B-S1	E5-2630E v4	2.20 GHz	10	85W	20MB	64GB 4x(16GB)	20	320GB	384GB
UCS-SP-C220M4-B-S2	E5-2620E v4	2.10 GHz	8	85W	20MB	64GB 4x(16GB)	20	320GB	384GB
UCS-SP-C220M4-B-A1	E5-2680E v4	2.40 GHz	14	120W	35MB	128GB 8x(16GB)	16	256GB	384GB
UCS-SP-C220M4-B-A2	E5-2650E v4	2.20 GHz	12	105W	30MB	128GB 8x(16GB)	16	256GB	384GB
UCS-SP-C240M4-B-S1	E5-2630E v4	2.20 GHz	10	85W	20MB	128GB 8x(16GB)	16	256GB	384GB
UCS-SP-C240M4-B-S2	E5-2620E v4	2.10 GHz	8	85W	20MB	128GB 8x(16GB)	16	256GB	384GB
UCS-SP-C240M4-B-A1	E5-2680E v4	2.40 GHz	14	120W	35MB	256GB 8x(32GB)	16	512GB	768GB
UCS-SP-C240M4-B-A2	E5-2650E v4	2.20 GHz	12	105W	30MB	256GB 8x(32GB)	16	512GB	768GB
UCS-SP-C240M4-B-F1	E5-2643E v4	3.40 GHz	6	135W	20MB	256GB 8x(32GB)	16	512GB	768GB
UCS-SP-C240M4-B-F2	E5-2637E v4	3.50 GHz	4	135W	15MB	256GB 8x(32GB)	16	512GB	768GB
UCS-SPC240M4L-B-S1	E5-2630E v4	2.20 GHz	10	85W	20MB	128GB 8x(16GB)	16	256GB	384GB
UCS-SPC240M4L-B-S2	E5-2620E v4	2.10 GHz	8	85W	20MB	128GB 8x(16GB)	16	256GB	384GB
UCS-SPC240M4L-B-F1	E5-2643E v4	3.40 GHz	6	135W	20MB	256GB 8x(32GB)	16	512GB	768GB
UCS-SPC240M4L-B-F2	E5-2637E v4	3.50 GHz	4	135W	15MB	256GB 8x(32GB)	16	512GB	768GB

SmartPlay Select (M4)

Modul Software Defined Storage



Schreiben Sie einfach eine E-Mail an Marcel.Weber@Comstor.com und Sie erhalten dieses Dokument komplett mit Preisinformationen

SvSAN Bundles

SKUS	STORAGE KONFIGURATION	
StorMagic- Best Value UCS-SP-SM-C220M4B	<ul style="list-style-type: none"> • 2x Intel® Xeon® Processor E5-2620 v4 • 2.10 GHz, 8-core, 85W, 20MB cache • 128GB DDR4 RDIMM (8x 16GB 2400 MHz) • Cisco Virtual Interface Card 1227 MLOM 	<ul style="list-style-type: none"> • Cisco 12G SAS Modular RAID Controller 2G Write Cache • 2x 770W PSU • 2x 32GB SD Card • 6x 1.2TB 12G SAS 10K RPM SFF HDD • 6TB Software License & 3 Yr StorMagic Platinum Support • 4x 3 Yr VMW License & Support
StorMagic- High Performance UCS-SP-SM-C240M4B	<ul style="list-style-type: none"> • 2x Intel® Xeon® Processor E5-2660 v4 • 2.00 GHz, 14-core, 105W, 35MB cache • 256GB DDR4 RDIMM (16x 16GB 2400 MHz) • Cisco Virtual Interface Card 1227 MLOM 	<ul style="list-style-type: none"> • Cisco 12G SAS Modular RAID Controller 2G Write Cache • 2x 1200W PSU • 2x 32GB SD Card • 10x 1.2TB 12G SAS 10K RPM SFF HDD • 6TB Software License & 3 Yr StorMagic Platinum Support • 4x 3 Yr VMW License & Support

Schreiben Sie einfach eine E-Mail an Marcel.Weber@Comstor.com und Sie erhalten dieses Dokument komplett mit Preisinformationen

Big Data Storage Bundles BaseT VICs

SKUS	STORAGE KONFIGURATION	
C220 M4 STARTER UCS-SPBD-C220M4-S1	<ul style="list-style-type: none"> 2x Intel® Xeon® Processor E5-2620 v4 2.10 GHz, 8-core, 85W, 20MB cache 256GB DDR4 RDIMM (16x 16GB 2400 MHz) Cisco Virtual Interface Card 1227 MLOM BaseT 	<ul style="list-style-type: none"> Cisco 12G SAS Modular RAID Controller 2G Write Cache 2x 770W PSU 8x 1.2TB 12G SAS 10K RPM SFF HDD
C240 M4 MEDIUM UCS-SPBD-C240M4-M	<ul style="list-style-type: none"> 2x Intel® Xeon® Processor E5-2680 v4 2.40 GHz, 14-core, 120W, 35MB cache 256GB DDR4 RDIMM (16x 16GB 2400 MHz) Cisco Virtual Interface Card 1227 MLOM BaseT 	<ul style="list-style-type: none"> Cisco 12G SAS Modular RAID Controller 2G Write Cache 2x 1400W PSU 16x 1.2TB 12G SAS 10K RPM SFF HDD 2x 120GB 2.5 inch Enterprise 6G SATA SSD (boot)
C240 M4 PERFORMANCE UCS-SPBD-C240M4-P1	<ul style="list-style-type: none"> 2x Intel® Xeon® Processor E5-2680 v4 2.40 GHz, 14-core, 120W, Cache 35MB 256GB DDR4 RDIMM (16x 16GB 2400 MHz) Cisco Virtual Interface Card 1227 MLOM BaseT 	<ul style="list-style-type: none"> Cisco 12G SAS Modular RAID Controller 2G Write Cache 2x 1400W PSU 24x 1.2TB 12G SAS 10K RPM SFF HDD 2x 240GB 2.5 inch Enterprise 6G SATA SSD (boot)
C240 M4 CAPACITY UCS-SPBD-C240M4-C1	<ul style="list-style-type: none"> 2x Intel® Xeon® Processor E5-2620 v4 2.10 GHz, 8-core, 85W, Cache 20MB 128GB DDR4 RDIMM (8x 16GB 2400 MHz) Cisco Virtual Interface Card 1227 MLOM BaseT 	<ul style="list-style-type: none"> Cisco 12G SAS Modular RAID Controller 2G Write Cache 2x 1200W PSU/800W V2 AC PSU for 2U 12x 6TB 12G SAS 7.2K RPM LFF HDD 2x 240GB 2.5 inch Enterprise 6G SATA SSD (boot) 1x Red Hat Enterprise Linux 1 yr support

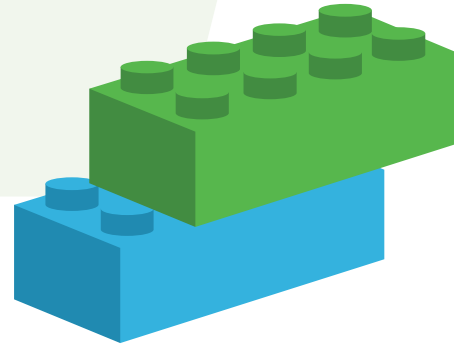
STORAGE SKUS	KONFIGURATION
SSD Storage UCS-SP-SD120G-4X	<ul style="list-style-type: none"> 120Gb 2.5 Inch 6Gb SATA SSD - 4 Pack
HDD Storage UCS-SP-D1P2T-4X	<ul style="list-style-type: none"> 1.2TB 12G SAS 10K RPM SFF HDD – 4 Pack
HDD Storage UCS-SP-D600G12G-2X	<ul style="list-style-type: none"> 600GB 12Gb SAS 10K RPM SFF HDD – 2 Pack

Big Data Storage Bundles Twin Ax VICs

SKUS	STORAGE KONFIGURATION	
C220 M4 STARTER UCS-SPBD-C220M4-ST	<ul style="list-style-type: none"> • 2x Intel® Xeon® Processor E5-2620 v4 • 2.10 GHz, 8-core, 85W, 20MB cache • 256GB DDR4 RDIMM (16x 16GB 2400 MHz) • Cisco Virtual Interface Card 1227 MLOM SFP+ 	<ul style="list-style-type: none"> • Cisco 12G SAS Modular RAID Controller 2G Write Cache • 2x 770W PSU • 8x 1.2TB 12G SAS 10K RPM SFF HDD
C240 M4 MEDIUM UCS-SPBD-C240M4-MT	<ul style="list-style-type: none"> • 2x Intel® Xeon® Processor E5-2680 v4 • 2.40 GHz, 14-core, 120W, 35MB cache • 256GB DDR4 RDIMM (16x 16GB 2400 MHz) • Cisco Virtual Interface Card 1227 MLOM SFP+ 	<ul style="list-style-type: none"> • Cisco 12G SAS Modular RAID Controller 2G Write Cache • 2x 1400W PSU • 16x 1.2TB 12G SAS 10K RPM SFF HDD • 2x 120GB 2.5 inch Enterprise 6G SATA SSD (boot)
C240 M4 LARGE ONE UCS-SPBD-C240M4L1T	<ul style="list-style-type: none"> • 2x Intel® Xeon® Processor E5-2680 v4 • 2.40 GHz, 14-core, 120W, Cache 35MB • 256GB DDR4 RDIMM (16x 16GB 2400 MHz) • Cisco Virtual Interface Card 1227 MLOM SFP+ 	<ul style="list-style-type: none"> • Cisco 12G SAS Modular RAID Controller 2G Write Cache • 2x 1400W PSU • 24x 1.2TB 12G SAS 10K RPM SFF HDD • 2x 120GB 2.5 inch Enterprise 6G SATA SSD (boot)
C240 M4 LARGE TWO UCS-SPBD-C240M4L2T	<ul style="list-style-type: none"> • 2x Intel® Xeon® Processor E5-2620 v4 • 2.10 GHz, 8-core, 85W, Cache 20MB • 128GB DDR4 RDIMM (8x 16GB 2400 MHz) • Cisco Virtual Interface Card 1227 MLOM SFP+ 	<ul style="list-style-type: none"> • Cisco 12G SAS Modular RAID Controller 2G Write Cache • 2x 1200W PSU/800W V2 AC PSU for 2U • 12x 4TB 3.5 inch 12G SAS 7.2K RPM HDD Hot Plug • 2x 120GB 2.5 inch Enterprise 6G SATA SSD (boot) • 1x Red Hat Enterprise Linux 1 yr support

STORAGE SKUS	KONFIGURATION
SSD Storage UCS-SP-SD120G-4X	<ul style="list-style-type: none"> • 120Gb 2.5 Inch 6Gb SATA SSD - 4 Pack
HDD Storage UCS-SP-D1P2T-4X	<ul style="list-style-type: none"> • 1.2TB 12G SAS 10K RPM SFF HDD – 4 Pack
HDD Storage UCS-SP-D600G12G-2X	<ul style="list-style-type: none"> • 600GB 12Gb SAS 10K RPM SFF HDD – 2 Pack

SmartPlay Select
**Modul Chassis and
Fabric Interconnect**



Schreiben Sie einfach eine E-Mail an Marcel.Weber@Comstor.com und Sie erhalten dieses Dokument komplett mit Preisinformationen

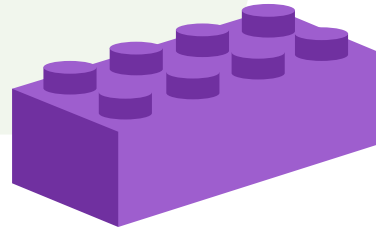
CHASSIS SKUS	CHASSIS KONFIGURATION
CLASSIC AC CHASSIS UCS-SP-5108-AC	<ul style="list-style-type: none"> • Single chassis with dual, 8-port fabric extenders • 2208XP (8 external, 32 internal, 10 Gb ports) • 4x twinax 3 meter cable • 4x 2500W AC power supply
DC CHASSIS UCS-SP-5108-DC	<ul style="list-style-type: none"> • Single chassis with dual, 8-port fabric extenders • 2208XP (8 external, 32 internal, 10 Gb ports) • 4x twinax 3 meter cable • 4x 2500W DC -48V power supply
CLASSIC AC CHASSIS 40GB Enabled IOM UCS-SP-5108-AC3	<ul style="list-style-type: none"> • Single chassis with dual, 4-port fabric extenders • 2x 2304 IOM (4 external, 8 internal, 40 Gb ports) • 4x 40G Base SFP+ 3 Meter Cable • 4x 2500W AC power supply
CLASSIC DC CHASSIS 40GB Enabled IOM UCS-SP-5108-DC3	<ul style="list-style-type: none"> • Single chassis with dual, 4-port fabric extenders • 2x 2304 IOM (4 external, 8 internal, 40 Gb ports) • 4x 40G Base SFP+ 3 Meter Cable • 4x 2500W DC -48V power supply

MINI CHASSIS	CHASSIS + 6324 FABRIC INTERCONNECT KONFIGURATION
MINI CHASSIS UCS-SP-MINI	<ul style="list-style-type: none"> • Pair of 6324 Fabric Interconnect In-chassis FI w/ 4 UP 1x40G, Exp 16-10G Ports • 4x 2500W AC power supply • Increased server compatibility including B200M3, B420M3, B200M4, C220M4 & C240M4 • Does not include UCS Central
MINI CHASSIS UCS-SP-MINI-2-5108	<ul style="list-style-type: none"> • Mini Chassis with IOM, 2x 10Gb Ports (4 external 16 internal) • 2x License for 40G Scalability Port for 6324 Fabric Interconnect • 2x QSFP to 4xSFP10G Passive Copper Splitter Cable 3M • 4x 2500W AC power supply • Does not include UCS Central, No FI hardware included

Schreiben Sie einfach eine E-Mail an Marcel.Weber@Comstor.com und Sie erhalten dieses Dokument komplett mit Preisinformationen

FABRIC SKUS	FABRIC INTERCONNECT KONFIGURATION		
40GB 32 Port FI UCS-SP-FI6332-2X	<ul style="list-style-type: none"> • Pair of 6332 FI w/ 8 port Licenses • Optics included (8x-40G QSFP SR-BD; 16x-40GBase-CR4 Copper +3 Meter Cable) 		
40GB 24 Port FI UCS-SP-FI633216-2X	<ul style="list-style-type: none"> • Pair of 6332-16UP FI w/ 12 port Licenses (4x 40G, 8X Unified Ports) • Optics included (8x-16Gbps Fibre Channel SW SFP+LC; 8x-40G QSFP SR-BD; 16x-40GBase-CR4 Copper +3 Meter Cable) 		
FI Licenses UCS-SP-FI6332-L-4X	<ul style="list-style-type: none"> • 6300 Series FI port License- 4 Pack 		
48 Port FI UCS-SP-FI48-2X	<ul style="list-style-type: none"> • Pair of 6248 FI w/ 24 port Licenses total • Optics included (8x-8Gbps Fibre Channel SW SFP+LC; 8x-10GBase-SR SFP Module; 8x-10GBase-CU SFP +3 Meter Cable) 		
96 Port FI UCS-SP-FI96-2X	<ul style="list-style-type: none"> • Pair of 6296 FI w/36 port Licenses total • Optics included (8x-8Gbps Fibre Channel SW SFP+LC; 8x-10GBase-SR SFP Module; 8x-10GBase-CU SFP +3 Meter Cable) 		
FI Licenses UCS-SP-FI-L-4X	<ul style="list-style-type: none"> • 6200 Series FI port License- 4 Pack 		

SmartPlay Select
**Modul Storage
and Memory**



Schreiben Sie einfach eine E-Mail an Marcel.Weber@Comstor.com und Sie erhalten dieses Dokument komplett mit Preisinformationen

STORAGE SKUS	KONFIGURATION
SSD Storage UCS-SP-SD120G-4X	<ul style="list-style-type: none"> 120Gb 2.5 Inch 6Gb SATA SSD - 4 Pack
SSD Storage UCS-SP-SD-3P8TB-4X	<ul style="list-style-type: none"> 3.8 TB 2.5 Inch Enterprise Value 6G SATA SSD - 4 Pack (Not supported in B-series or LFF C-Series)
SSD Storage UCS-SP-SD-1P6TB-4X	<ul style="list-style-type: none"> 1.6 TB 2.5 Inch Enterprise Performance 12G SAS SSD (10X Endurance) – 4 Pack (Not supported in B-series or LFF C-Series)
HDD Storage UCS-SP-D1P2T-4X	<ul style="list-style-type: none"> 1.2TB 12G SAS 10K RPM SFF HDD – 4 Pack
HDD Storage UCS-SP-D600G12G-2X	<ul style="list-style-type: none"> 600GB 12Gb SAS 10K RPM SFF HDD – 2 Pack
HDD Storage UCS-SP-H1P8TB-4X	<ul style="list-style-type: none"> 1.8 TB 12G SAS 10K RPM SFF HDD – 4 Pack (Not supported in B-series or LFF C-Series)
HDD Storage UCS-SP-H4TB-4X	<ul style="list-style-type: none"> 4 TB 12G SAS 7.2K RPM LFF HDD – 4 Pack (Not supported in B-series or SFF C-Series)

STORAGE SWITCHING SKUS	KONFIGURATION
Cisco MDS 1RU Base Unit UCS-EP-MDS9148S-1	<ul style="list-style-type: none"> Cisco MDS 9148S Switch with 8G Optics attached & 12 active ports
Cisco MDS UCS-EP-MDS9396S-16	<ul style="list-style-type: none"> Cisco MDS 9396S Switch with 16G Optics attached & 48 Enabled ports 48x16G SW SFP
Additional Licenses UCS-EP-MDS9396SL2	<ul style="list-style-type: none"> Additional 12 Port licenses with 16G Optics attached (upgrade in increments of 12)
Additional Licenses UCS-EP-MDS9148S-L1	<ul style="list-style-type: none"> Additional 12 Port licenses with 8G Optics attached. (upgrade in increments of 12)

Schreiben Sie einfach eine E-Mail an Marcel.Weber@Comstor.com und Sie erhalten dieses Dokument komplett mit Preisinformationen

Speicher SKUS**	KONFIGURATION
UCS-SP-M16-RVA	<ul style="list-style-type: none">16GB DDR4 2400 MHz RDIMM/PC4 (Upgrade within Server) (Not sold stand alone)
UCS-SP-M32-RVA	<ul style="list-style-type: none">32GB DDR4 2400 MHz RDIMM/PC4 (Upgrade within Server) (Not sold stand alone)

Fusion ioMemory SKUS	KONFIGURATION
UCS-SP-FIO-13MP-2	<ul style="list-style-type: none">1300GB Fusion ioMemory3 PX Performance line for B-Series - 2 Pack
UCS-SP-FIO-10PS-4	<ul style="list-style-type: none">1600GB Fusion ioMemory3 SX Scale line for B-Series - 2 Pack

** Sie können den Arbeitsspeicher während der Konfiguration erweitern. Die Übersicht finden Sie [hier](#).

KONTAKTIEREN SIE UNS:

Marcel Weber

Business Development Manager DC&V
Mobile: +49 30 346 03 507
marcel.weber@comstor.com

Peter Dejakum

IT Pre-Sales Consultant DC&V
Office: +49 30 346 03 554
peter.dejakum@comstor.com



Comstor
Delivering Results Together
powered by WestconGroup

 Cloud  Global Deployment  Services

 Security  UCC  Networking  Data Center